

UNITED STATES  
SECURITIES AND EXCHANGE COMMISSION

Washington, D. C. 20549

FORM 8-K

CURRENT REPORT

Pursuant to Section 13 or 15(d) of the Securities Exchange Act of 1934

Date of Report (Date of earliest event reported) October 27, 2015

<b><u>Commission File Number</u></b>	<b><u>Registrant, State of Incorporation, Address and Telephone Number</u></b>	<b><u>I.R.S. Employer Identification No.</u></b>
1-3526	<b>The Southern Company</b> (A Delaware Corporation) 30 Ivan Allen Jr. Boulevard, N.W. Atlanta, Georgia 30308 (404) 506-5000	58-0690070
001-11229	<b>Mississippi Power Company</b> (A Mississippi Corporation) 2992 West Beach Gulfport, Mississippi 39501 (228) 864-1211	64-0205820

The names and addresses of the registrants have not changed since the last report.

This combined Form 8-K is filed separately by two registrants: The Southern Company and Mississippi Power Company. Information contained herein relating to each registrant is filed by each registrant solely on its own behalf. Each registrant makes no representation as to information relating to the other registrant.

Check the appropriate box below if the Form 8-K filing is intended to simultaneously satisfy the filing obligation of the registrants under any of the following provisions:

- ☐ Written communications pursuant to Rule 425 under the Securities Act (17 CFR 230.425)
  - ☐ Soliciting material pursuant to Rule 14a-12 under the Exchange Act (17 CFR 240.14a-12)
  - ☐ Pre-commencement communications pursuant to Rule 14d-2(b) under the Exchange Act (17 CFR 240.14d-2(b))
  - ☐ Pre-commencement communications pursuant to Rule 13e-4(c) under the Exchange Act (17 CFR 240.13e-4(c))
-

The Southern Company (“Southern Company”) and Mississippi Power Company (“Mississippi Power”) are filing this Current Report on Form 8-K to provide information regarding the cost estimate for Mississippi Power’s integrated coal gasification combined cycle project in Kemper County, Mississippi (the “Kemper IGCC”) and the related recognition of charges to income.

The information in Items 2.02 and 7.01 in this Current Report on Form 8-K, including the exhibit attached hereto, shall not be deemed “filed” for purposes of Section 18 of the Securities Exchange Act of 1934, as amended, or otherwise subject to the liabilities under that Section. Furthermore, such information, including the exhibit attached hereto, shall not be deemed to be incorporated by reference in any filing under the Securities Act of 1933, as amended, except as shall be expressly set forth by specific reference in such filing.

**Item 2.02. Results of Operations and Financial Condition.**

The information set forth below in Item 8.01 related to the updated cost estimate for completing the Kemper IGCC, the related recognition of charges to income and the reclassification of the Phase II credits (as defined below) is incorporated by reference into this Item 2.02.

**Item 7.01. Regulation FD Disclosure.**

On October 27, 2015, Mississippi Power submitted its Kemper County Integrated Coal Gasification Combined Cycle Project Monthly Status Report through September 2015 (the “September PSC Report”) to the Mississippi Public Service Commission (the “Mississippi PSC”) pursuant to Docket No. 2009-UA-14. A copy of the September PSC Report is furnished as Exhibit 99.01 to this Current Report on Form 8-K.

**Item 8.01. Other Matters.**

See MANAGEMENT’S DISCUSSION AND ANALYSIS - FINANCIAL CONDITION AND LIQUIDITY - “Capital Requirements and Contractual Obligations” of Southern Company, MANAGEMENT’S DISCUSSION AND ANALYSIS - FUTURE EARNINGS POTENTIAL - “Integrated Coal Gasification Combined Cycle” and - FINANCIAL CONDITION AND LIQUIDITY - “Capital Requirements and Contractual Obligations” of Mississippi Power, and Note 3 to the financial statements of Southern Company under “Integrated Coal Gasification Combined Cycle” and of Mississippi Power under “Integrated Coal Gasification Combined Cycle” in Item 8 of each company’s Annual Report on Form 10-K for the fiscal year ended December 31, 2014 (the “Form 10-K”). See also MANAGEMENT’S DISCUSSION AND ANALYSIS - FINANCIAL CONDITION AND LIQUIDITY - “Capital Requirements and Contractual Obligations” of Mississippi Power, MANAGEMENT’S DISCUSSION AND ANALYSIS - FUTURE EARNINGS POTENTIAL - “Integrated Coal Gasification Combined Cycle” of Mississippi Power, and Note (B) to the Condensed Financial Statements under “Integrated Coal Gasification Combined Cycle” in each company’s Quarterly Report on Form 10-Q for the quarter ended June 30, 2015 (the “Form 10-Q”) for additional information regarding the construction of the Kemper IGCC, including: (1) the cost cap set by the Mississippi PSC of \$2.88 billion, net of \$245 million of grants awarded to the project by the U.S. Department of Energy under the Clean Coal Power Initiative Round 2 (the “DOE Grants”) and excluding the cost of the lignite mine and equipment, the cost of the carbon dioxide pipeline facilities, allowance for funds used during construction (“AFUDC”), and certain general exceptions, including change of law, force majeure, and beneficial capital (which exists when Mississippi Power demonstrates that the purpose and effect of the construction cost increase is to produce

efficiencies that will result in a neutral or favorable effect on customers relative to the original proposal for the Certificate of Public Convenience and Necessity) (the “Cost Cap Exceptions”); (2) the expected in-service date and related cost estimate; and (3) investment tax credits allocated to Mississippi Power in connection with the Kemper IGCC.

In connection with the filing of its Kemper County Integrated Coal Gasification Combined Cycle Project Monthly Status Report through August 2015, Mississippi Power disclosed that it was continuing to evaluate the construction, commissioning and start-up schedule for the Kemper IGCC. Mississippi Power has reviewed this schedule and continues to expect that the Kemper IGCC will be placed in service during the first half of 2016, which represents no change to the previously disclosed schedule.

Since the filing of the Form 10-Q, Mississippi Power has reported additional estimated costs subject to the cost cap in the aggregate amount of approximately \$40 million, which included estimated costs of approximately \$25 million and \$15 million in its Kemper County Integrated Coal Gasification Combined Cycle Project Monthly Status Reports through July 2015 and August 2015, respectively. In connection with the schedule review described above, Mississippi Power has revised its previous cost estimate, which included projected costs through March 31, 2016, to include projected costs through June 30, 2016.

Accordingly, the September PSC Report contains a further increase in the cost estimate subject to the cost cap for the Kemper IGCC of approximately \$110 million, including a further adjustment of approximately \$20 million for the month of September related to challenges in start-up and commissioning activities as well as operational readiness and approximately \$90 million related to the recognition of additional schedule costs through June 30, 2016. The total estimated Kemper IGCC cost subject to the \$2.88 billion cost cap as

of September 30, 2015 was approximately \$5.11 billion, net of the DOE Grants and excluding the Cost Cap Exceptions. Mississippi Power does not intend to seek rate recovery for any costs related to the construction of the Kemper IGCC that exceed the \$2.88 billion cost cap, net of the DOE Grants and excluding the Cost Cap Exceptions. As a result of this revised cost estimate, Southern Company and Mississippi Power recorded total pre-tax charges to income for the estimated probable losses on the Kemper IGCC of approximately \$150 million (\$93 million after-tax) during the third quarter 2015.

As previously disclosed, any extension of the in-service date beyond June 30, 2016 is currently estimated to result in additional base costs of approximately \$25 million to \$30 million per month, which includes maintaining necessary levels of start-up labor, materials, and fuel, as well as operational resources required to execute start-up and commissioning activities. However, additional costs may be required for remediation of any further equipment and/or design issues identified. Any extension of the in-service date with respect to the Kemper IGCC beyond June 30, 2016 would also increase costs for the Cost Cap Exceptions, which are not subject to the \$2.88 billion cost cap established by the Mississippi PSC. These costs include AFUDC, which is currently estimated to total approximately \$12 million per month, as well as operating expenses on Kemper IGCC assets placed in service, consulting and legal fees, and carrying costs, which are estimated to total approximately \$6 million per month, a portion of which is being deferred in regulatory asset accounts.

As previously disclosed, the Internal Revenue Service has allocated investment tax credits to the Kemper IGCC under Section 48A (Phase II) of the Internal Revenue Code of 1986, as amended (the “Phase II credits”), which require, among other things, an in-service date no later than April 19, 2016. As of September 30, 2015, Mississippi Power had utilized

approximately \$235 million of the Phase II credits. Mississippi Power anticipates the in-service date will occur subsequent to April 19, 2016, but has not made a final determination to that effect. Accordingly, Mississippi Power will reclassify the Phase II credits to a current liability on its September 30, 2015 balance sheet, with no impact to net income. Repayment to the Internal Revenue Service would occur in connection with the quarterly estimated tax payment following the final determination that the in-service date would occur subsequent to April 19, 2016. The cash funding requirements necessary for Mississippi Power to make any repayment are expected to be provided by Southern Company.

Southern Company's and Mississippi Power's analysis of the time needed to complete the start-up and commissioning activities for the Kemper IGCC will continue until the remaining Kemper IGCC assets are placed in service. Further cost increases and/or extensions of the in-service date may result from factors including, but not limited to, labor costs and productivity, adverse weather conditions, shortages and inconsistent quality of equipment, materials, and labor, contractor or supplier delay, non-performance under construction or other agreements, operational readiness, including specialized operator training and required site safety programs, unforeseen engineering or design problems, start-up activities for this first-of-a-kind technology (including major equipment failure and system integration), and/or operational performance (including additional costs to satisfy any operational parameters ultimately adopted by the Mississippi PSC). In subsequent periods, any further changes in the estimated costs to complete construction and start-up of the Kemper IGCC subject to the \$2.88 billion cost cap, net of the DOE Grants and excluding the Cost Cap Exceptions, will be reflected in Southern Company's and Mississippi Power's statements of income and these changes could be material.

The ultimate outcome of this matter cannot be determined at this time.

*Exhibit*

Exhibit 99.01     Kemper County Integrated Coal Gasification Combined Cycle Project Monthly Status  
Report through September 2015 to the Mississippi Public Service Commission  
submitted by Mississippi Power Company pursuant to Docket No. 2009-UA-14.

*Cautionary Note Regarding Forward-Looking Statements*

*Certain information contained in this Current Report on Form 8-K and in the September PSC Report is forward-looking information based on current expectations and plans that involve risks and uncertainties. Forward-looking information includes, among other things, statements concerning the projected cost and schedule for the completion of construction and start-up of the Kemper IGCC and the repayment of investment tax credits. Southern Company and Mississippi Power caution that there are certain factors that could cause actual results to differ materially from the forward-looking information that has been provided. The reader is cautioned not to put undue reliance on this forward-looking information, which is not a guarantee of future performance and is subject to a number of uncertainties and other factors, many of which are outside the control of Southern Company and Mississippi Power; accordingly, there can be no assurance that such suggested results will be realized. The following factors, in addition to those discussed in the Form 10-K and subsequent securities filings, could cause actual results to differ materially from management expectations as suggested by such forward-looking information: changes in tax and other laws and regulations to which Mississippi Power is subject as well as changes in application of existing laws and regulations; the ability to control costs and avoid cost overruns during the development and construction of facilities, which include the development and construction of generating facilities with designs that have not been finalized or previously constructed, including changes in labor costs and productivity, adverse weather conditions, shortages and inconsistent quality of equipment, materials, and labor, contractor or supplier delay, non-performance under construction or other agreements, operational readiness, including specialized operator training and required site safety programs, unforeseen engineering or design problems, start-up activities (including major equipment failure and system integration), and/or operational performance (including additional costs to satisfy any operational parameters ultimately adopted by the Mississippi PSC); the ability to construct facilities in accordance with the requirements of permits and licenses, to satisfy any environmental performance standards and the requirements of tax credits and other incentives, and to integrate facilities into the Southern Company system upon completion of construction; advances in technology; actions related to cost recovery for the Kemper IGCC, including the ultimate impact of the 2015 decision of the Mississippi Supreme Court, the Mississippi PSC's August 2015 interim rate order, and related legal or regulatory proceedings, Mississippi PSC review of the prudence of Kemper IGCC costs and approval of permanent rate recovery plans, actions relating to proposed securitization, the ability to utilize bonus depreciation, which currently requires that assets be placed in service in 2015,*

*satisfaction of requirements to utilize investment tax credits and grants, and the ultimate impact of the termination of the proposed sale of an interest in the Kemper IGCC to South Mississippi Electric Power Association; and the ability of counterparties of Mississippi Power to make payments as and when due and to perform as required. Southern Company and Mississippi Power expressly disclaim any obligation to update any forward-looking information.*



SIGNATURE

Pursuant to the requirements of the Securities Exchange Act of 1934, each of the registrants has duly caused this report to be signed on its behalf by the undersigned hereunto duly authorized.

Date: October 27, 2015

THE SOUTHERN COMPANY

By /s/Melissa K. Caen  
Melissa K. Caen  
Corporate Secretary

MISSISSIPPI POWER COMPANY

By /s/Melissa K. Caen  
Melissa K. Caen  
Assistant Secretary

**Mississippi Power  
Kemper County IGCC Project**

**Table of Contents**

**MPSC Docket No. 2009-UA-0014  
Monthly Status Report  
Through September 2015**

<b>Project Costs and Summary</b>	<b>1</b>
<b>Key Contracts Over \$10M</b>	<b>2</b>
<b>Project Updates</b>	<b>3</b>
<b>Safety</b>	
<b>Schedule</b>	
<b>Permits and Approvals</b>	
<b>Mississippi Economic Impact</b>	<b>4</b>
<b>Liberty Mine Summary</b>	<b>8</b>

---

# Mississippi Power Kemper County IGCC Project

## Project Costs and Summary Total Project <sup>(1)</sup>

## MPSC Docket No. 2009-UA-0014 Monthly Status Report Through September 2015

Table 1: Capped Plant Costs (in millions of dollars)

Cost Category	Current View	Variance from Previous Month	Actuals through September 2015	Confirmed Cost %
Land	\$32.3	\$0.0	\$32.3	100%
EPC	4,191.5	13.4	4,075.9	97%
Transmission	93.9	(0.0)	93.7	100%
Fuel Facilities	153.2	0.3	150.3	100%
Pre Commercial Operations	618.8	37.6	492.1	76%
CC & Related Assets Placed in Service - Non-Incremental <sup>(2)</sup>	25.4	1.9	15.8	62%
Project Development	70.1	1.4	65.2	93%
Start Up Fuel / Energy	42.5	2.3	9.6	23%
DOE CCPI2 Funding	(245.3)	0.0	(245.3)	
Ad Valorem	26.8	0.4	24.9	93%
Schedule Risk	120.0	60.0	0.0	
Contingency	36.0	(7.3)	0.0	
Total Plant <sup>(3)</sup>	5,166.3	110.0	4,714.6	
Deduction for Cap Exceptions (BC/FMCIL) <sup>(4)</sup>	(55.9)	0.0	(55.9)	
Total Plant Subject to Cost Cap	\$5,110.4	\$110.0	\$4,658.6	94%

Table 2: Exemptions and Exceptions (in millions of dollars)

Cost Category	Current View	Variance from Previous Month	Actuals through September 2015
Mine (defers on p.8) <sup>(5)</sup>	\$232.1	(\$0.0)	\$232.1
CO2 Pipeline	\$109.4	\$0.4	\$103.7
Regulatory and Other Asset Accounts <sup>(6)</sup>	\$198.6	\$11.6	\$166.0
CC & Related Assets Placed in Service - Incremental (Net of Revenues) <sup>(7)</sup>	\$14.5	\$0.7	\$2.7
Project AFUDC - Non Mine <sup>(8)</sup>	\$659.8	\$36.8	\$549.4
Process Development Allowance	\$46.5	\$0.0	\$26.5
Beneficial Capital <sup>(9)</sup>	\$47.6	\$0.0	\$47.6
Force Majeure <sup>(4)</sup>	\$2.7	\$0.0	\$2.7
Change in Law <sup>(4)</sup>	\$5.6	\$0.0	\$5.6
Total Exemptions and Exceptions	\$1,316.8	\$49.4	\$1,136.3

Table 3: Total Project Costs (in millions of dollars)

Cost Category	Current View
Total Plant Subject to Cost Cap <sup>(10)</sup>	\$5,110.4
Total Exemptions and Exceptions <sup>(11)</sup>	\$1,316.8
Total Project Cost	\$6,427.2
Amount in Excess of the Cost Cap	(\$2,230.4)
Total Amount Eligible for Recovery Under 2012 MPSC Order <sup>(11)(12)</sup>	\$4,196.8

(1) Effective August 2015, Mississippi Power Company began expensing certain ongoing project costs that previously were being deferred as regulatory assets. These costs continue to be included in the current view of project costs in this report.

(2) Non-incremental operating and maintenance costs related to the combined cycle and associated common facilities placed in service in August 2014 that are subject to the \$2.88 billion cost cap.

(3) Actual plant costs through September 2015 and current view cost include costs related to Beneficial Capital, Force Majeure and Change in Law.

(4) Redesignation of Beneficial Capital, Force Majeure, and Change in Law from Capped Plant Cost (table 1) current view and actual cost to Exemptions and Exceptions (table 2) through September 2015, as provided for in the 2012 MPSC order, subject to approval by the MPSC.

(5) The Liberty Mine was placed in service in June 2013. Construction costs incurred since that date are reported above as Mine costs. Operational costs incurred since the mine was placed in service are not included in this report. These costs are considered to be post-COD capital and fuel inventory costs and will be subject to MPUS and MPSC oversight in conjunction with the annual review of fuel costs.

(6) Effective August 2015, certain debt carrying costs (associated with certain assets placed in service and other non-construction work in progress accounts) that previously were deferred as regulatory assets are now being recognized through income, however, such costs continue to be included in the current view of project costs in this report. The equity return associated with assets placed in service and other non-construction work in progress accounts, as well as debt carrying costs recovered through wholesale rates, are not included in this report.

(7) Incremental operating and maintenance costs related to the combined cycle and associated common facilities placed in service in August 2014. This amount includes a credit for variable operating and maintenance expenses related to energy sales, net of station service.

(8) AFUDC related to the combined cycle and associated common facilities placed in service ceased in August 2014.

(9) Mississippi Power Company has revised its cost estimate subject to the cost cap for the Kemper IGCC to include approximately \$110 million, including \$20 million related to challenges in start-up and commissioning activities as well as operational readiness, and approximately \$90 million related to the recognition of additional schedule costs through June 30, 2016.

(10) The increase in cost estimate for the total Exemptions and Exceptions is primarily related to the recognition of additional schedule costs through June 30, 2016.

(11) Total Amount Eligible for Recovery under 2012 MPSC Order is net of Mississippi Power Company's estimated loss as a result of exceeding the cost cap of \$2.88 billion. This amount includes estimated costs through June 30, 2015, is based on information available through the filing date, and is subject to review and approval by the MPSC.

(12) Total Amount Eligible for Recovery Under 2012 MPSC Order includes the 15% undivided interest in the Kemper IGCC that was previously projected to be purchased by South Mississippi Electric Power Association (SMEPA). On May 20, 2015, SMEPA notified Mississippi Power Company of its termination of the asset purchase agreement and requested the return of a total of \$275 million of deposits, which was returned with accrued interest on June 3, 2015. Mississippi Power Company is evaluating its alternatives related to the investment and related costs associated with the 15% ownership interest. The outcome of this matter cannot be determined at this time.

### Major Items and Milestones Achieved

- The purchase of 2,968 acres for the plant site has been completed.
- Construction is complete for the nitrogen plant, water plant, water storage lake, administrative and electrical buildings, light storage dome, electrical ductbanks, concrete installation, structural steel, process piping installation, cable tray, tubing, and underground piping.
- The combined cycle was placed in service on natural gas on August 9, 2014.
- Construction is complete on the three 115kV line rebuild projects. The four new 230kV lines, one new 115kV line, and the mine service line are complete and energized. Construction is complete on eight substations and the Sweet - Styles 138v line.
- The treated effluent, natural gas, and CO<sub>2</sub> pipeline installations are 100% complete. Closeout activities remain on all three pipelines.
- Long term contracts have been signed for the sale of CO<sub>2</sub>, sulfuric acid, and ammonia. The CO<sub>2</sub> contracts provide termination rights as Mississippi Power has not satisfied its contractual obligation to deliver captured CO<sub>2</sub> by May 11, 2015. Since May 11, 2015, Mississippi Power has been engaged in ongoing discussions with its off-takers regarding the status of the CO<sub>2</sub> delivery schedule as well as other issues related to the respective agreements.
- First Fire on natural gas of Gasifier "B" Startup Burner achieved on March 1, 2015 and First Fire on natural gas of Gasifier "A" Startup Burner achieved on March 2, 2015.
- Air Flow Testing - Train "A" was achieved April 6, 2015, and Air Flow Testing - Train "B" was achieved May 22, 2015.

### Mississippi Economic Impact

- Mississippi workforce contributed 534 construction jobs in September for the Project. A total of 539 Mississippi companies have provided construction, equipment, material or professional services for the Project.

### Overall Project Status

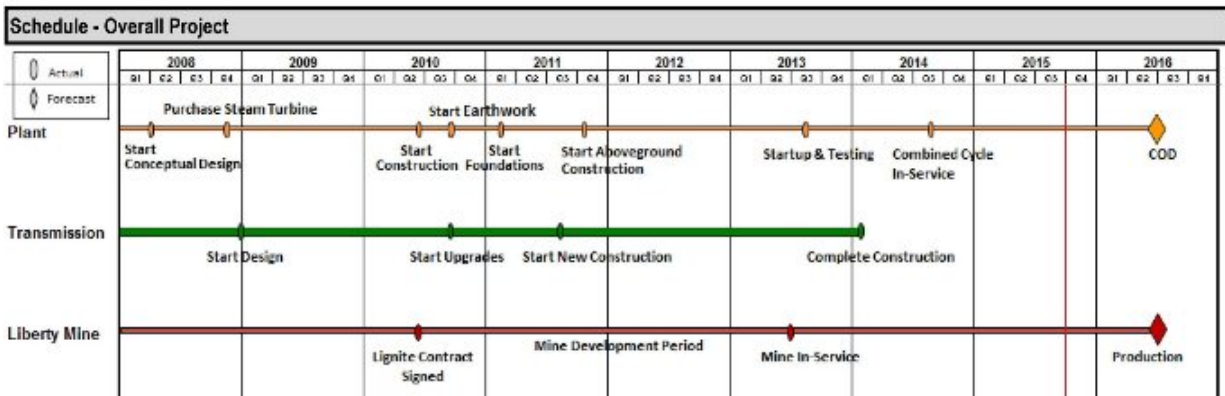
- Mississippi Power placed the combined cycle unit and associated common facilities portion of the Kemper IGCC in service on August 9, 2014. The remainder of the Kemper IGCC is expected to be placed in service in the first half of 2016.

Table 4: Key Contracts Over \$10M

(in millions of dollars)	Issue Initial Inquiry	Award Date	Current View	Variance from Previous Month
<b>Equipment and Material Contracts Over \$10M</b> (Represents 92% of total equipment and material contracts)		Dates in BOLD are actual dates; others are forecast dates	<b>\$1,482.1</b>	<b>(\$0.4)</b>
Steam Turbine Generator	Nov-07	Aug-08		
Gas Turbines	Dec-08	Aug-09		
Heat Recovery Steam Generators	Oct-09	Jun-10		
Syngas Coolers	Jan-10	May-10		
Transport Gasifiers	Jan-10	May-10		
Fluid Bed Dryers	Mar-10	Jul-10		
Air Compressors	Apr-10	Sep-10		
Nitrogen Generation System	Jun-10	Dec-10		
Particulate Control Device (PCD) Systems	Nov-10	Sep-11		
Generator Step-up Transformers	Jul-10	Jan-11		
Station Service Transformers	Jul-10	Dec-10		
Coal Dense Phase Conveyors	Sep-10	Nov-10		
Coal Lock Vessels	Aug-10	Jan-11		
Water Treatment System	Jul-10	Feb-11		
Structural Steel	Sep-10	Dec-10		
Heat Exchangers	Apr-10	Multiple		
Chemical Reactors	Jul-10	Multiple		
Vessels	Jun-10	Multiple		
Heat Exchangers	Jul-10	Multiple		
Compressors	Jun-10	Multiple		
Catalyst	Jul-10	Multiple		
Pumps	Jun-10	Multiple		
Drums	Jan-10	Multiple		
Unit Chillers	Jul-10	Multiple		
Construction Piping	Jun-10	Multiple		
Instrumentation & Controls	Oct-10	Multiple		
Electrical	Apr-11	Multiple		
Transmission Line Structures	May-11	Multiple		
<b>Construction Contracts Over \$10M</b> (Represents 99% of total construction contracts)		Dates in BOLD are actual dates; others are forecast dates	<b>\$1,904.6</b>	<b>\$5.6</b>
Cut and Fill Excavation	Jul-10	Aug-10		
Underground	Nov-10	Jan-11		
Concrete	Nov-10	Jan-11		
Gasifier General Contractor	Apr-11	Jul-11		
Combined Cycle General Contractor	Oct-11	Dec-11		
Water Lateral	Jul-11	Sep-11		
Architectural Buildings	Feb-11	Multiple		
Cooling Tower	Feb-10	Sep-10		
Insulation	Jan-12	Jun-12		
Field Erected Tanks	Nov-10	Feb-11		
Water Storage Pond	Nov-11	Dec-11		
Gas Clean-up & By Products	Oct-11	Dec-11		
Turbine Generator	Nov-11	Dec-11		
HRSG Erection	Aug-11	Sep-11		
Piling	Sep-10	Dec-10		
Ash Storage	Nov-11	Dec-11		
<b>Total</b>			<b>\$3,386.7</b>	<b>\$5.2</b>

Safety			
OSHA Recordable Incident Rate:	Project to Date: .45	Work Hours: Project to Date: 35,793,198	
	Year to Date: .15	Year to Date: 3,849,861	

Schedule - Key 90-Day Milestones	Forecast	Actual	Comments
Fluidization Trial - Train A	Nov-15		Previously forecasted in Oct-15
LDF Non-Dome	Nov-15		
Refractory Cure - Train A	Nov-15		Previously forecasted in Oct-15



Permits and Approvals			
Dates in <b>Bold</b> are actual dates, others are forecast dates			
Description	Status	Submittal	Approval
State Groundwater Test Well Permit MS-GW-16425	Approved	5/30/07	6/26/07
State NPDES Stormwater Run-off Permit MSR104866	Approved	11/13/07	3/12/10
State PSD Air Permit 1380-00017	Approved	12/20/07	3/12/10
State Groundwater Production Well Permit MS-GW-16562	Approved	5/21/08	7/22/08
MPSC Certificate	Approved	1/16/09	6/3/10
State Permit to Operate Wastewater Disposal System w/no Discharge Permit MSU009005 <sup>(1)</sup>	Approved	11/19/09	3/12/10
State Dam Safety Approval App. No. 09-041	Approved	12/1/09	3/23/10
State Dam Safety Approval App. No. 09-040	Approved	12/1/09	3/23/10
FAA stack permit	Approved	2/8/11	3/14/11
DOE NEPA ROD (CCPI2)	Approved	11/6/09	8/19/10
State 401 Water Quality Certification	Approved	10/27/09	9/14/10
USACE 404 Permit for Wetlands SAM-2009-01149-DMY	Approved	10/27/09	11/18/10
State Solid Waste Management Permit	Approved	6/11/10	11/15/11
State Dam Safety - Make-up Reservoir	Approved	6/3/11	8/12/11
State Dam Safety - Retention Pond B	Approved	6/1/11	8/9/11
Dam Safety LDF Retention Pond Permit	Approved	10/6/11	11/2/11
NPDES Emergency Discharge Permit	Approved	12/1/11	8/12/14
NPDES Baseline Industrial Storm Water General Permit	Approved	5/24/13	3/7/14
Title IV Acid Rain Permit	Pending	10/13/11	
Title V Operating Permit	Pending	8/22/14	
Risk Management Plan (RMP)	Approved	4/22/15	4/22/15

(1) State Permit to Operate Wastewater Disposal System w/no Discharge Permit MSU009005 was revoked on 8/12/14 due to the approval of the NPDES Emergency Discharge Permit on 8/12/14.

Economic Impact

Table 5: Mississippi Construction, Equipment, Material and Professional Services Companies (Tier 1)

Company Name	City	Type of Work	Company Name	City	Type of Work
3 D Trucking	Louisville	Professional Service	Brown Printing Company	Meridian	Construction
3point Technologies	Columbus	Professional Service	Brown & Mitchell	Gulfport	Construction
4 County Electric Power Association	Columbus	Construction	Brunini	Jackson	Professional Services
A E Allen	Pass Christian	Construction	Buckwalter Stadium Inc.	Meridian	Construction
A&B Electric	Meridian	Professional Services	Burford Electric Service, Inc	Columbus	Construction
AA Calibration Services	Yazoo City	Professional Service	Burkhalter Rigging Inc	Columbus	Construction
ABF Freight	Jackson	Material	Burk's Aviation	Hattiesburg	Professional Services
Accu-Fab & Construction, Inc	Moss Point	Material	Business Interiors	Jackson	Professional Services
ADCO Companies Ltd	Brandon	Equipment	Can't Be Beat Fencing	Perkinston	Construction
Advanced Mold Professionals LLC	Lake	Professional Service	Capital Concrete Cutting Inc	Clinton	Materials
AES Limited PC	Meridian	Construction	Capitol Hardware Company, Inc.	Jackson	Professional Services
Aggreko Cooling Tower Service	Ridgeland	Equipment	Carter Miller Associates	Meridian	Professional Services
Air Center of Mississippi	Jackson	Material	Cavco, Inc	Bailey	Construction
Air Management, LLC	Meridian	Construction	Central Culvert & Pipe	Philadelphia	Material
Air Tool Supply	West Point	Material	Central Mississippi Communications	Kosciusko	Professional Services
Airgas South	Meridian	Construction	Central Office Supply	Kosciusko	Construction
AJA Management	Jackson	Professional Services	Central Pipe Supply Inc	Jackson	Material
Al Covington / Bill Oubre	Meridian	Construction	Chain Electric Co.	Hattiesburg	Construction
All Brand Foods	Hattiesburg	Professional Services	Chancellor Supply	Laurel	Material
All Clean Janitorial	DeKalb	Professional Services	Chet's Paint & Body Shop	Meridian	Professional Services
All Safe Technologies	Gulfport	Professional Services	Chevron Products	Moss Point	Equipment
All Star Printing	Columbus	Materials	Chris Haynes Electric Supply	Jackson	Materials
Almetek Industries Inc	Ridgeland	Material	Cintas Corporation	Jackson & Meridian	Construction
American Controls	Amory	Material	Cintas FAS	Jackson	Professional Services
American Fire & Safety	Laurel	Professional Services	City of Meridian	Meridian	Professional Services
American Forest Management	Meridian	Professional Services	Cives Steel Co.	Rosedale	Material
American Rental	Philadelphia	Construction	Collins and Null	Hattiesburg	Professional Services
American Supply Co Inc	Jackson	Material	Collinsville Hardware	Meridian	Material
Anderson Retail	Hattiesburg	Material	Columbus Rubber & Gasket	Columbus	Construction
APAC Mississippi Inc	Jackson	Construction	Commercial Interiors	Long Beach	Professional Services
Appraisal Group	Philadelphia	Professional Services	Complete Industrial Solutions LLC	Vancleave	Construction
Appraisers Associated Ltd.	Meridian	Professional Services	Comsouth	Meridian	Professional Services
Aquaterra Engineering LLC	Madison	Professional Services	Consolidated Electrical Distributors Inc	Gulfport	Material
Argus Analytical	Jackson	Professional Services	Consolidated Pipe & Supply Co	Pascagoula	Material
Asplundh Tree Expert Co	D'Iberville	Construction	Contract Fabricators, Inc.	Holly Springs	Equipment
Atwood Fence	Kosciusko	Construction	Corbett Bolt & Screw	Gulfport	Material
B Clean	Laurel	Professional Services	CSS Document Solutions	Meridian	Professional Services
Baker Ready Mix	Louisville	Material	CTC, Inc	Louisville	Material
Balch & Bingham, LLP	Gulfport	Professional Services	Cuevas Auction, LLC	Picayune	Professional Services
Barnhart Crane & Rigging	Jackson	Construction	Custom Creations and More	Meridian	Construction
Bay Pest Control	Ocean Springs	Professional Services	D&E Construction Co Inc	Meridian	Construction
Bayou Management Inc	Columbus	Professional Services	DACO LLC	Columbus	Professional Services
Beckham Concrete Cutting, LLC	Perkinston	Construction	Daily Equipment Co Inc	Jackson	Construction
Bellavilla Community Club	Bailey	Construction	David L Moon	Collinsville	Construction
Bengal Resources and Associates, Inc.	Columbia	Professional Services	Davidson Hauling & Constriction	Marion	Material
Betty Luke	Bailey	Professional Services	Davis Trailer	Moselle	Construction
Bill Oakley Consulting Hydrologist, Inc.	Brandon	Professional Services	Deep South Services LLC	Hickory	Material
Bill's Trailer Sales	Ackerman	Materials	Design Precast and Pipe	Gulfport	Construction
Black Brothers, Inc.	Ackerman	Construction	Dickerson Petroleum	Kosciusko	Construction
Blackwell Shepards Locksmith	Meridian	Professional Services	Ditch Witch of Mississippi	Pearl	Construction
Blaine's Trailer Rental & Sale	Richland	Construction	Dixie Mat & Hardwood Co Inc	Sandy Hook	Material
BMI Environmental Services	Gulfport	Professional Services	Document Storage Solutions	Jackson	Construction
Bonds of Love Ministries	DeKalb	Construction	Doug Jones & Son Construction Co	Meridian	Construction
Briggs Equipment	Jackson	Construction	Douglas Inc.	Jackson	Professional Service
Broadmoor Home	Meridian	Construction	Dowdle Gas Company	DeKalb	Construction

continued on page 5

Economic Impact (continued from page 4)

Table 5: (continued) Mississippi Construction, Equipment, Material and Professional Services Companies (Tier 1)

Company Name	City	Type of Work	Company Name	City	Type of Work
Dr. David Lang, PhD	Starkville	Professional Services	Heblon Heating & Air Conditioning	Meridian	Construction
DZ Atlantic	Moss Point	Equipment	Hemphill Construction	Florence	Construction
E. Patrick Cassidy & Associates Inc.	Gulfport	Professional Services	Henderson Steel Corp	Marion	Construction
Earl Dudley Associated	Jackson	Construction	Herring Gas Co Inc.	Philadelphia	Construction
East Mississippi Electric Power Assoc.	Meridian	Construction	Hi Grade Gin Corporation	Winona	Construction
ECO Systems (now Allen Eng. & Science)	Jackson	Professional Services	Hilton Spears Custom Cabinets	Philadelphia	Construction
Eddie Briggs, Attorney at Law	Madison	Professional Services	HJM Forest Resource Management	DeKalb	Professional Services
Educational Furniture & Equipment Co.	Meridian	Construction	Holladay Construction	Poplarville	Construction
Eley Guild Hardy Architects	Biloxi	Professional Services	Holloway Termite & Pest Services	Meridian	Professional Services
Endom Welding & Trailer Repair	Ellisville	Construction	Hooper Electronics	Pascagoula	Material
Engineering Plus	Meridian	Professional Services	Hotel & Restaurant Supply	Meridian	Material
Engineering Services	Jackson	Professional Services	Howard Industries	Laurel	Equipment
Eutaw Construction	Aberdeen	Construction	HRD Safety	Jackson	Material
F L Clayton Trust	Meridian	Construction	Hughes Brothers Inc	Jackson	Material
Faison Office Products Co LLC	Gulfport	Construction	Ice Plant	Meridian	Construction
Fastenal	Philadelphia	Material	Industrial Commercial Fire Protection	Lucedale	Construction
FC&E Engineering LLC	Brandon	Professional Services	Industrial Electric Motor Works Inc	Meridian	Professional Services
Ferguson Enterprises	Jackson	Equipment	Industrial Machine & Manufacturing	Meridian	Professional Services
Firestone	Meridian	Professional Services	Industrial Steel Corp.	Jackson	Construction
Fish and Fisher	Jackson	Construction	Infolab, LLC	Clarksdale	Professional Services
Fluid Process & Pumps	Florence	Material	Ivy Consulting	Quitman	Professional Services
Forest Services, Inc.	Pelahatchie	Professional Services	J & J Contractors	Collinsville	Professional Services
Forestry Suppliers	Brandon	Construction	J W Lee Company, Inc	Gulfport	Equipment
Fraleigh Dozer Service	Collins	Construction	Jabez Group, LLC	Madison	Professional Services
Fulton Line Service	Preston	Construction	Jackson Bolt & Screw	Jackson	Material
G & K Services	Jackson	Professional Services	James Self Inc dba JSI Communication	Pearl	Material
G & O Supply Co. Inc.	Houston	Material	JH Haynes Electric Co Inc	Gulfport	Professional Services
Gary G. Williams, Appraisals	Flowood	Professional Services	Joe McGee Construction	Lake	Construction
Genesis Telecommunications	Collinsville	Professional Services	John B. Stewart Real Estate Appraiser	Canton	Professional Services
GEO Products	Madison	Material	John C Stennis Memorial Hospital	DeKalb	Professional Services
George's Auto Parts	Meridian	Construction	John Fayard Moving & Warehousing, LLC	Gulfport	Materials
Geotechnical Engineering Assoc.	Ridgeland	Professional Services	John's Welding	Meridian	Professional Services
Gipson Steel Inc	Meridian	Construction	Johnson Surveying	Collinsville	Professional Services
Glass Inc.	Meridian	Material	K. C. Garbage & Solid Waste	DeKalb	Construction
Glassworx	Philadelphia	Material	Kelly Services	Gulfport	Professional Services
Glenn Hollingsworth Enterprise LLC	Hickory	Construction	Kemper Construction Supply	DeKalb	Material
Glenn Machine Works	Columbus	Construction	Kemper County Landfill	DeKalb	Professional Services
Glover Young Walton & Simmons, PLLC	Meridian	Professional Services	Kemper County Messenger	DeKalb	Professional Services
Godwin Group	Jackson	Professional Services	Kemper Electric Supply	DeKalb	Material
GoForth Forest Management, Inc.	Meridian	Professional Services	Kennedy Construction	Meridian	Construction
GraRock Trucking	Macon	Construction	Knesal Engineering Services, Inc.	Gulfport	Professional Services
Greenway Construction	Wiggins	Construction	Knowles Material Co	Jackson	Material
Gulf Coast Fence	Pascagoula	Construction	L & M Carpet Cleaning	Meridian	Professional Services
Gulf Office Systems Inc	Saucier	Professional Services	Lauderdale County Farm Supply	Meridian	Materials
Gulf Sales & Supply	Pascagoula	Construction	Laurel Ford	Laurel	Equipment
Gulf South Survey & Environmental	Biloxi	Professional Services	Laurel Machine & Foundry Co	Laurel	Materials
H & H Chief Sales	Carthage	Construction	Lawyers PLLC	Meridian	Professional Services
H & H Construction	Greenwood	Construction	Layne Christenson	Jackson	Construction
H & P Leasing, Inc.	Flowood	Construction	LPK Architects	Meridian	Professional Services
Hampton & Associates Law Office	DeKalb	Professional Services	Luke Printing Company	Meridian	Professional Services
Hanson	Gulfport	Construction	Lyle Machinery Company	Jackson	Equipment
Hargrove Engineers Constructors	Pascagoula	Professional Services	M G Dyess Inc	Bassfield	Construction
Havard Pest Control	Hattiesburg	Professional Services	M&M Holdings	Kilmichael	Materials
HD Supply Waterworks LTD	Pearl	Material	Magnolia Steel Co, Inc.	Meridian	Professional Services
Heartland Pump Rental & Sales Inc	Horn Lake	Construction	Mailroom Consultants	Jackson	Professional Services

continued on page 6



Economic Impact (continued from page 5)

Table 5: (continued) Mississippi Construction, Equipment, Material and Professional Services Companies (Tier 1)

Company Name	City	Type of Work	Company Name	City	Type of Work
Malouf	Greenwood	Construction	Plan House Printing and Graphics	Tupelo	Professional Services
Mar-Com Comm, Inc.	Decatur	Construction	Powell Transportation	Columbia	Material
Marion Water Department	Marion	Construction	Preformed Line Products Co	Ridgeland	Material
Mars Manufactured Homes	Meridian	Construction	Print Plus	Meridian	Professional Services
Martin Supply (MISCO)	Saltillo	Materials	Pritchard Engineering	Starkville	Professional Services
Martin Truck & Tractor	Columbus	Construction	Pro Turf, Inc.	Winona	Construction
Marvin's	Meridian	Material	Procall Services	Biloxi	Professional Services
Mary Joyce Angero	Meridian	Construction	Progressive Pipeline	Meridian	Construction
Max Floor Specialist	Brandon	Professional Services	ProModular	Jackson	Construction
McCrory Construction Services	Columbus	Construction	Provine Helicopter Service, Inc.	Greenwood	Professional Services
McElroy Plumbing & Heating	Meridian	Construction	Puckett Machinery Co	Jackson	Construction
Medical Foundation (Rush Hospital)	Meridian	Professional Services	Puckett Rents Inc	Jackson	Construction
MEI Electrical Inc	Philadelphia	Construction	Quality Welding & Fabrication	Columbia	Equipment
Melvin Chaney Jr Real Estate Appraiser	Madison	Professional Services	Ralph L. Morgan	Meridian	Material
Mercury Aviation Inc	Flowood	Professional Services	Richard R. Hite Appraisal, LLC	Canton	Professional Services
Meridian Community College	Meridian	Professional Services	Robert's Sewing Machine Parts	Meridian	Professional Services
Meridian Personnel Service	Meridian	Professional Services	Robinson Electric Supply Co Inc	Meridian	Material
Meridian Tire & Brake	Meridian	Professional Services	Roto-Rooter Sewer & Drain	Meridian	Professional Services
Micro Methods Laboratory Inc	Ocean Springs	Professional Services	RMKPC, Inc dba Orkin	Meridian	Professional Services
Mid South Welding	Meridian	Construction	Robine & Welch Machine & Tool Co.	Laurel	Construction
Mikropul	Iuka	Equipment	Rush Care	Meridian	Professional Services
Miller Enterprises	Hattiesburg	Construction	Ryan Motors Inc	Hattiesburg	Construction
MillerCo Inc.	Gulfport	Construction	S&S Welding	Ellisville	Professional Services
Milton's A/C Service	DeKalb	Construction	Sam Oswalt & Son, Inc.	Starkville	Construction
Mississippi Beverage Water, LLC	Meridian	Construction	Sanders Air & Heat	Meridian	Professional Services
Mississippi Department of Transportation	Jackson	Construction	Sanders Gas	Meridian	Construction
Mississippi Gauge & Supply, Inc.	Meridian	Materials	Sequel Electrical Supply	Meridian	Material
Mississippi State University	Starkville	Professional Services	Service Master	Marion	Professional Services
Missouth Vital Records	Meridian	Professional Services	Sherwin Williams	Meridian	Material
Mitchell Sign, Inc.	Meridian	Professional Services	Sign's Plus of Meridian	Meridian	Construction
MMC Material	Meridian	Construction	Singley Construction Co	Columbia	Construction
Modern Landscape Design	Meridian	Professional Services	Sirmon & Associates	Pelahatchie	Professional Services
Modular Space Corp	Jackson	Construction	Slay Steel Inc	Meridian	Material
Motion Industries	Meridian	Materials	South Mississippi Hydroseeding	Wiggins	Construction
Mowdy Cabinetry	Meridian	Professional Services	Southern Business Supply	Meridian	Construction
MSC Industrial	Meridian	Materials	Southern Chevrolet	DeKalb	Construction
Necalse Locksmith Service	Gulfport	Materials	Southern Colonel Homes Inc	Hattiesburg	Construction
Neel Schaffer	Jackson	Professional Services	Southern Hose & Industrial	Jackson	Material
Nehring	Ridgeland	Material	Southern Natural Resources, Inc.	Stewart	Professional Services
Newell Paper Company	Meridian	Materials	Southern Pine Electric	Taylorville	Equipment
NGK Locke Inc	Ridgeland	Material	Southern Pipe & Supply Co Inc	Gulfport	Material
NL Carson	Carthage	Construction	Southern Surveyors Group LLC	Gulfport	Professional Services
North Mississippi Medical Center	Eupora	Professional Services	Southern Tire Mart	Meridian	Construction
Northwest Kemper Water Association	Preston	Construction	Southern Waste Disposal	Meridian	Construction
Office Furniture Jackson CIN	Ridgeland	Construction	SPCS Inc	Gulfport	Professional Services
Office Innovations	Ridgeland	Construction	Specialty Fencing	Meridian	Construction
ORR Safety Corp	Jackson	Material	Specialty Fuel	Kosciusko	Construction
Pac Services	Biloxi	Professional Services	Starkville Computers	Starkville	Construction
Patrick Allen Garage Door Co.	Meridian	Construction	Stevie Holiday	DeKalb	Professional Services
Pearson Services	Louisville	Construction	Stewart Environmental Construction	Tupelo	Construction
Perfect Touch Contractors LLC	DeKalb	Construction	Stribling Equipment	Jackson	Construction
Perma R Products	Grenada	Material	Strickland Companies	Columbus	Construction
Peterbilt Truck Center	Jackson	Construction	Structural Steel Services	Meridian	Material
Pettigrew Forestry Consultants	Kiln	Professional Services	Stuart C. Irby Co.	Meridian/Jackson	Material
Pickering & Associates	Jackson	Professional Services	Sturgis Mat	Ackerman	Material

continued on page 7



**Mississippi Power  
Kemper County IGCC Project**

**Total Project  
Mississippi Economic Impact**

**MPSC Docket No. 2009-UA-0014  
Monthly Status Report  
Through September 2015**

Economic Impact (continued from page 6)

Table 5: (continued) Mississippi Construction, Equipment, Material and Professional Services Companies (Tier 1)

Company Name	City	Type of Work	Company Name	City	Type of Work
Sudden Service	Louisville	Construction	Waterstone Business Strategies	Brandon	Professional Services
Sunbelt Equipment Marketing	Meridian	Construction	Watson Quality Ford	Jackson	Construction
Sunbelt Insulation	Lucedale	Material	Watt Equipment	DeKalb	Construction
Sutton Lumber	Meridian	Material	Wilkerson Construction	DeKalb	Construction
Suzu Q Monogramming Screenprinting	Philadelphia	Construction	William Clay	DeKalb	Construction
Swetman Security Service, Inc	Biloxi	Professional Service	Woodall Electric Inc	Meridian	Professional Services
System Scale	Jackson	Equipment	Woodstock Furniture	Meridian	Construction
TK Stanley	Waynesboro	Material	Working Solutions	Meridian	Professional Services
Taylor Machine Works	Louisville	Construction	Yard Services	Meridian	Professional Services
Tencarva Machinery	Jackson	Construction			
Terracon Consultants	Madison	Professional Services			
The 1869 Group LLC	Jackson	Construction			
The Bolt Co dba Henderson Bolt	Meridian	Material			
The McGinnis Lumber Company	Meridian	Material			
The Service Company of Mississippi	Meridian	Professional Services			
Thomas Refrigeration	Meridian	Professional Services			
Threaded Fasteners	Gulfport	Material			
Thomasson Company	Philadelphia	Construction			
Tice Engineering	Wiggins	Professional Services			
Tim Parker Construction	Soso	Construction			
Timber Craft, Inc.	DeKalb	Professional Services			
Tolbert Chevrolet	Philadelphia	Construction			
Tooney's Tire Center	DeKalb	Professional Services			
Town of DeKalb	DeKalb	Construction			
Town of Marion	Marion	Construction			
Traffic Control Products Company	Brandon	Construction			
Tri-State Consulting Services	Philadelphia	Professional Services			
Truckers Supply	Meridian	Construction			
TST&E, LLC	Carriere	Construction			
Tull Brothers	Meridian	Construction			
U Save Car & Truck Rental	Meridian	Construction			
Underwood Sales Inc	Ovett	Construction			
United Fence	Meridian	Construction			
United Rentals N.A. (formally RSC Eqmt)	Meridian	Construction			
Vice Brothers Unlimited	Moss Point	Material			
Vice Construction Co.	Moss Point	Construction			
Vick's Paint & Body Shop	DeKalb	Professional Services			
Volvo Rents	Hattiesburg	Construction			
Vulcan	Laurel	Material			
W G Yates & Sons Construction	Biloxi	Construction			
W.L. Cook	Bailey	Professional Services			
Walker Audio	Biloxi	Professional Services			
Walley Forestry	Ellisville	Professional Services			
Waring Oil Company LLC	Vicksburg	Material			
Waste Management	Tupelo & Meridian	Professional Services			
Waste Pro of MS	Meridian	Professional Services			
Waters International	Meridian	Material			
Waters Truck & Tractor	Kosciusko	Construction			

Total Mississippi Contracts - Tier 1 and Tier 2 (in millions of dollars) \$1,720

Total Mississippi Spend through September 2015 - Tier 1 and Tier 2 (in millions of dollars) \$1,704

Mississippi Workforce	Plant	Mine	Total
Construction Jobs	504	0	504
Plant/Mine Jobs	213	111	324

**Mine Status**

The surface coal mining and water pollution control permits for the Liberty Mine were approved by the MDEQ Permit Board on December 13, 2011. Liberty Mine began commercial operations on June 5, 2013. The dragline was placed in service on November 15, 2013. Construction activities are complete for the mine.

**Table 6: Mine Costs (in millions of dollars)**

Cost Category	Current View	Actuals through September 2015
Development	\$80.2	\$80.2
Land and Mineral Leases	29.2	29.2
Equipment	106.3	106.3
Mine AFUDC	16.5	16.5
<b>TOTAL <sup>(1)</sup></b>	<b>\$232.1</b>	<b>\$232.1</b>

(1) The Liberty Mine was placed in service in June 2013. Construction costs incurred since that date are reported above as Mine costs. Operational costs incurred since the mine was placed in service are not included in this report. These costs are considered to be post-CCD capital and fuel inventory costs and will be subject to MPUS and MPSC oversight in conjunction with the annual review of fuel costs.

**Mine Safety**

Recordable Incident Rate: 1.08 Project to Date Work Hours: 925,492

**Mine Permits and Approvals**

Dates in **Bold** are actual dates, others are forecast dates

Description	Status	Submittal	Approval
401 Water Quality Certification	Approved	<b>8/9/10</b>	<b>9/14/10</b>
404 USCAE Permit	Approved	<b>8/9/10</b>	<b>12/10/10</b>
MSHA Sedimentation Pond (Revision to include pond)	Approved	<b>8/29/13</b>	<b>6/23/14</b>
MSHA Mine Identification Number	Approved	<b>12/7/10</b>	<b>12/8/10</b>
State mine permit (SMCRA)	Approved	<b>1/18/11</b>	<b>12/14/11</b>
NPDES permit	Approved	<b>3/1/11</b>	<b>12/14/11</b>
State Dam Construction Permit	Approved	<b>3/18/11</b>	<b>6/29/11</b>
State Stormwater Permit	Approved	<b>11/23/11</b>	<b>1/27/12</b>
SPCC Plan	Approved	<b>3/30/12</b>	<b>3/30/12</b>
State Wastewater Discharge (Sewage)	<i>Not required; zero discharge system planned</i>		
Dragline FAA permit	Approved	<b>7/9/12</b>	<b>8/13/12</b>