

UNITED STATES
SECURITIES AND EXCHANGE COMMISSION

Washington, D. C. 20549

FORM 8-K

CURRENT REPORT

Pursuant to Section 13 or 15(d) of the Securities Exchange Act of 1934

Date of Report (Date of earliest event reported) February 2, 2016

| <u>Commission File Number</u> | <u>Registrant, State of Incorporation, Address and Telephone Number</u> | <u>I.R.S. Employer Identification No.</u> |
|--|--|--|
| 1-3526 | The Southern Company (A Delaware Corporation) 30 Ivan Allen Jr. Boulevard, N.W. Atlanta, Georgia 30308 (404) 506-5000 | 58-0690070 |
| 001-11229 | Mississippi Power Company (A Mississippi Corporation) 2992 West Beach Gulfport, Mississippi 39501 (228) 864-1211 | 64-0205820 |

The names and addresses of the registrants have not changed since the last report.

This combined Form 8-K is filed separately by two registrants: The Southern Company and Mississippi Power Company. Information contained herein relating to each registrant is filed by each registrant solely on its own behalf. Each registrant makes no representation as to information relating to the other registrant.

Check the appropriate box below if the Form 8-K filing is intended to simultaneously satisfy the filing obligation of the registrants under any of the following provisions:

- ☐ Written communications pursuant to Rule 425 under the Securities Act (17 CFR 230.425)
 - ☐ Soliciting material pursuant to Rule 14a-12 under the Exchange Act (17 CFR 240.14a-12)
 - ☐ Pre-commencement communications pursuant to Rule 14d-2(b) under the Exchange Act (17 CFR 240.14d-2(b))
 - ☐ Pre-commencement communications pursuant to Rule 13e-4(c) under the Exchange Act (17 CFR 240.13e-4(c))
-

The Southern Company (“Southern Company”) and Mississippi Power Company (“Mississippi Power”) are filing this Current Report on Form 8-K to provide information regarding the schedule and cost estimate for Mississippi Power’s integrated coal gasification combined cycle project in Kemper County, Mississippi (the “Kemper IGCC”) and the related recognition of charges to income.

The information in Items 2.02 and 7.01 in this Current Report on Form 8-K, including the exhibit attached hereto, shall not be deemed “filed” for purposes of Section 18 of the Securities Exchange Act of 1934, as amended, or otherwise subject to the liabilities under that Section. Furthermore, such information, including the exhibit attached hereto, shall not be deemed to be incorporated by reference in any filing under the Securities Act of 1933, as amended, except as shall be expressly set forth by specific reference in such filing.

Item 2.02. Results of Operations and Financial Condition.

The information set forth below in Item 8.01 related to the updated cost estimate for completing the Kemper IGCC and the related recognition of charges to income is incorporated by reference into this Item 2.02.

Item 7.01. Regulation FD Disclosure.

On February 2, 2016, Mississippi Power submitted its Kemper County Integrated Coal Gasification Combined Cycle Project Monthly Status Report through December 2015 (the “December PSC Report”) to the Mississippi Public Service Commission (the “Mississippi PSC”) pursuant to Docket No. 2009-UA-14. A copy of the December PSC Report is furnished as Exhibit 99.01 to this Current Report on Form 8-K.

Item 8.01. Other Matters.

See MANAGEMENT’S DISCUSSION AND ANALYSIS - FINANCIAL CONDITION AND LIQUIDITY - “Capital Requirements and Contractual Obligations” of

Southern Company, MANAGEMENT’S DISCUSSION AND ANALYSIS - FUTURE EARNINGS POTENTIAL - “Integrated Coal Gasification Combined Cycle” and - FINANCIAL CONDITION AND LIQUIDITY - “Capital Requirements and Contractual Obligations” of Mississippi Power, and Note 3 to the financial statements of Southern Company and Mississippi Power under “Integrated Coal Gasification Combined Cycle” in Item 8 of each company’s Annual Report on Form 10-K for the fiscal year ended December 31, 2014 (the “Form 10-K”). See also MANAGEMENT’S DISCUSSION AND ANALYSIS - FINANCIAL CONDITION AND LIQUIDITY - “Capital Requirements and Contractual Obligations” of Mississippi Power, MANAGEMENT’S DISCUSSION AND ANALYSIS - FUTURE EARNINGS POTENTIAL - “Integrated Coal Gasification Combined Cycle” of Mississippi Power, and Note (B) to the Condensed Financial Statements under “Integrated Coal Gasification Combined Cycle” in each company’s Quarterly Report on Form 10-Q for the quarter ended September 30, 2015 (the “Form 10-Q”) for additional information regarding the construction of the Kemper IGCC, including: (1) the cost cap set by the Mississippi PSC of \$2.88 billion, net of \$245 million of grants awarded to the project by the U.S. Department of Energy under the Clean Coal Power Initiative Round 2 (the “DOE Grants”) and excluding the cost of the lignite mine and equipment, the cost of the carbon dioxide pipeline facilities, allowance for funds used during construction (“AFUDC”), and certain general exceptions, including change of law, force majeure, and beneficial capital (which exists when Mississippi Power demonstrates that the purpose and effect of the construction cost increase is to produce efficiencies that will result in a neutral or favorable effect on customers relative to the original proposal for the Certificate of Public Convenience

and Necessity) (the “Cost Cap Exceptions”) and (2) the expected in-service date and related cost estimate.

In connection with the filing of its Kemper County Integrated Coal Gasification Combined Cycle Project Monthly Status Report through November 2015, Mississippi Power disclosed that it was evaluating the construction, commissioning, and start-up schedule for the Kemper IGCC as the result of challenges in ongoing start-up and commissioning activities, including repairs and modifications to the refractory lining inside the gasifiers, as well as operational readiness. Mississippi Power has completed this review and currently expects that the Kemper IGCC will be placed in service during the third quarter of 2016.

Since the filing of the Form 10-Q, Mississippi Power has reported additional estimated costs subject to the cost cap in the aggregate amount of approximately \$73 million, which included estimated costs of approximately \$62 million and \$11 million in its Kemper County Integrated Coal Gasification Combined Cycle Project Monthly Status Reports through October 2015 and November 2015, respectively. In connection with the completion of the schedule review described above, Mississippi Power has revised its previous cost estimate, which included projected costs through June 30, 2016, to include projected additional schedule costs through August 31, 2016.

Accordingly, the December PSC Report contains a further increase in the cost estimate subject to the cost cap for the Kemper IGCC of approximately \$110 million, including a further adjustment of approximately \$40 million for the month of December related to challenges in start-up and commissioning activities, including repairs and modifications to the refractory lining inside the gasifiers, and approximately \$70 million related to the extension of the expected in-service date described above. The total estimated

Kemper IGCC cost subject to the \$2.88 billion cost cap as of December 31, 2015 was approximately \$5.294 billion, net of the DOE Grants and excluding the Cost Cap Exceptions. Mississippi Power does not intend to seek rate recovery for any costs related to the construction of the Kemper IGCC that exceed the \$2.88 billion cost cap, net of the DOE Grants and excluding the Cost Cap Exceptions. As a result of this revised cost estimate, Southern Company and Mississippi Power recorded total pre-tax charges to income for the estimated probable losses on the Kemper IGCC of approximately \$183 million (\$113 million after-tax) during the fourth quarter 2015.

Any extension of the in-service date beyond August 31, 2016 is currently estimated to result in additional base costs of approximately \$25 million to \$35 million per month, which includes maintaining necessary levels of start-up labor, materials, and fuel, as well as operational resources required to execute start-up and commissioning activities. However, additional costs may be required for remediation of any further equipment and/or design issues identified. Any extension of the in-service date with respect to the Kemper IGCC beyond August 31, 2016 would also increase costs for the Cost Cap Exceptions, which are not subject to the \$2.88 billion cost cap established by the Mississippi PSC. These costs primarily include AFUDC, which is currently estimated to total approximately \$13 million per month.

The analysis of the time needed to complete the start-up and commissioning activities for the Kemper IGCC will continue until the remaining Kemper IGCC assets are placed in service. Further cost increases and/or extensions of the in-service date may result from factors including, but not limited to, labor costs and productivity, adverse weather conditions, shortages and inconsistent quality of equipment, materials, and labor, contractor or supplier

delay, non-performance under construction or other agreements, operational readiness, including specialized operator training and required site safety programs, unforeseen engineering or design problems, start-up activities for this first-of-a-kind technology (including major equipment failure and system integration), and/or operational performance (including additional costs to satisfy any operational parameters ultimately adopted by the Mississippi PSC). In subsequent periods, any further changes in the estimated costs to complete construction and start-up of the Kemper IGCC subject to the \$2.88 billion cost cap, net of the DOE Grants and excluding the Cost Cap Exceptions, will be reflected in Southern Company's and Mississippi Power's statements of income and these changes could be material.

The ultimate outcome of this matter cannot be determined at this time.

Exhibit

Exhibit 99.01 Kemper County Integrated Coal Gasification Combined Cycle Project Monthly Status Report through December 2015 to the Mississippi Public Service Commission submitted by Mississippi Power Company pursuant to Docket No. 2009-UA-14.

Cautionary Note Regarding Forward-Looking Statements

Certain information contained in this Current Report on Form 8-K and in the December PSC Report is forward-looking information based on current expectations and plans that involve risks and uncertainties. Forward-looking information includes, among other things, statements concerning the projected cost and schedule for the completion of construction and start-up of the Kemper IGCC. Southern Company and Mississippi Power caution that there are certain factors that could cause actual results to differ materially from the forward-looking information that has been provided. The reader is cautioned not to put undue reliance on this forward-looking information, which is not a guarantee of future performance and is subject to a number of uncertainties and other factors, many of which are outside the control of Southern Company and Mississippi Power; accordingly, there can be no assurance that such suggested results will be realized. The following factors, in addition to those discussed in the Form 10-K and subsequent securities filings, could cause actual results to differ materially from management expectations as suggested by such forward-looking information: changes in tax and other laws and regulations to which Mississippi

Power is subject as well as changes in application of existing laws and regulations; the ability to control costs and avoid cost overruns during the development and construction of facilities, which include the development and construction of generating facilities with designs that have not been finalized or previously constructed, including changes in labor costs and productivity, adverse weather conditions, shortages and inconsistent quality of equipment, materials, and labor, contractor or supplier delay, non-performance under construction or other agreements, operational readiness, including specialized operator training and required site safety programs, unforeseen engineering or design problems, start-up activities (including major equipment failure and system integration), and/or operational performance (including additional costs to satisfy any operational parameters ultimately adopted by the Mississippi PSC); the ability to construct facilities in accordance with the requirements of permits and licenses, to satisfy any environmental performance standards and the requirements of tax credits and other incentives, and to integrate facilities into the Southern Company system upon completion of construction; advances in technology; actions related to cost recovery for the Kemper IGCC, including the ultimate impact of the 2015 decision of the Mississippi Supreme Court, the Mississippi PSC's December 2015 rate order, and related legal or regulatory proceedings, Mississippi PSC review of the prudence of Kemper IGCC costs and approval of permanent rate recovery plans, actions relating to proposed securitization, satisfaction of requirements to utilize investment tax credits and grants, and the ultimate impact of the termination of the proposed sale of an interest in the Kemper IGCC to South Mississippi Electric Power Association; and the ability of counterparties of Mississippi Power to make payments as and when due and to perform as required. Southern Company and Mississippi Power expressly disclaim any obligation to update any forward-looking information.

SIGNATURE

Pursuant to the requirements of the Securities Exchange Act of 1934, each of the registrants has duly caused this report to be signed on its behalf by the undersigned hereunto duly authorized.

Date: February 2, 2016

THE SOUTHERN COMPANY

By /s/Melissa K. Caen
Melissa K. Caen
Corporate Secretary

MISSISSIPPI POWER COMPANY

By /s/Melissa K. Caen
Melissa K. Caen
Assistant Secretary

| | |
|------------------------------------|----------|
| Project Costs and Summary | 1 |
| Key Contracts Over \$10M | 2 |
| Project Updates | 3 |
| Safety | |
| Schedule | |
| Permits and Approvals | |
| Mississippi Economic Impact | 4 |
| Liberty Mine Summary | 8 |

Mississippi Power Kemper County IGCC Project

Project Costs and Summary Total Project ⁽¹⁾

MPSC Docket No. 2009-UA-0014 Monthly Status Report Through December 2015

Table 1: Capped Plant Costs (in millions of dollars)

| Cost Category | Current View | Variance from Previous Month | Actuals through December 2015 | Confirmed Cost % |
|--|--------------|------------------------------|-------------------------------|------------------|
| Land | \$32.3 | \$0.0 | \$32.4 | 100% |
| EPC | 4,275.6 | 33.1 | 4,163.8 | 98% |
| Transmission | 93.9 | 0.0 | 93.8 | 100% |
| Fuel Facilities | 155.0 | 1.4 | 151.8 | 100% |
| Pre Commercial Operations | 735.1 | 26.5 | 570.1 | 69% |
| CC & Related Assets Placed in Service - Non-Incremental ⁽²⁾ | 28.7 | 1.3 | 20.4 | 71% |
| Project Development | 72.0 | 1.1 | 67.6 | 93% |
| Start Up Fuel / Energy | 43.2 | 1.7 | 11.2 | 26% |
| DOE CCPI2 Funding | (245.3) | 0.0 | (245.3) | |
| Ad Valorem | 28.0 | 1.1 | 25.4 | 90% |
| Schedule Risk | 70.0 | 40.0 | 0.0 | |
| Contingency | 60.2 | 3.7 | 0.0 | |
| Total Plant ⁽³⁾ | 5,349.6 | 110.0 | 4,891.2 | |
| Deduction for Cap Exceptions (BC/FM/CIL) ⁽⁴⁾ | (55.9) | 0.0 | (55.9) | |
| Total Plant Subject to Cost Cap | \$5,293.7 | \$110.0 | \$4,835.3 | 93% |

Table 2: Exemptions and Exceptions (in millions of dollars)

| Cost Category | Current View | Variance from Previous Month | Actuals through December 2015 |
|--|--------------|------------------------------|-------------------------------|
| Mine (delete on p.8) ⁽⁵⁾ | \$232.2 | \$0.0 | \$232.2 |
| CO2 Pipeline | \$109.7 | \$0.2 | \$104.7 |
| Regulatory and Other Asset Accounts ⁽⁶⁾ | \$198.2 | \$6.5 | \$173.7 |
| CC & Related Assets Placed in Service - Incremental (Net of Revenues) ⁽⁷⁾ | \$13.4 | (\$1.8) | \$9.1 |
| Project AFUDC - Non Mine ⁽⁸⁾ | \$687.1 | \$27.0 | \$584.9 |
| Process Development Allowance | \$46.5 | \$0.0 | \$29.2 |
| Beneficial Capital ⁽⁹⁾ | \$47.6 | \$0.0 | \$47.6 |
| Force Majeure ⁽⁶⁾ | \$2.7 | \$0.0 | \$2.7 |
| Change in Law ⁽⁶⁾ | \$5.6 | \$0.0 | \$5.6 |
| Total Exemptions and Exceptions | \$1,343.0 | \$32.1 | \$1,189.6 |

Table 3: Total Project Costs (in millions of dollars)

| Cost Category | Current View |
|---|--------------|
| Total Plant Subject to Cost Cap ⁽⁴⁾ | \$5,293.7 |
| Total Exemptions and Exceptions | \$1,343.0 |
| Total Project Cost | \$6,636.7 |
| Amount in Excess of the Cost Cap | (\$2,413.7) |
| Total Amount Eligible for Recovery Under 2012 MPSC Order ^{(10) (11)} | \$4,223.0 |

(1) Effective August 2015, Mississippi Power Company began expensing certain ongoing project costs that previously were being deferred as regulatory assets. These costs continue to be included in the current view of project costs in this report.

(2) Non-incremental operating and maintenance costs related to the combined cycle and associated common facilities placed in service in August 2014 that are subject to the \$2.08 billion cost cap.

(3) Actual plant costs through December 2015 and current view cost includes costs related to Beneficial Capital, Force Majeure, and Change in Law.

(4) Redefinition of Beneficial Capital, Force Majeure, and Change in Law from Capped Plant Cost (table 1) current view and actual cost to Exemptions and Exceptions (table 2) through December 2015, as provided for in the 2012 MPSC order, subject to approval by the MPSC.

(5) The Liberty Mine was placed in service in June 2013. Construction costs incurred since that date are reported above as Mine costs. Operational costs incurred since the mine was placed in service are not included in this report. These costs are considered to be post-COD capital and fuel inventory costs and will be subject to MPUS and MPSC oversight in conjunction with the annual review of fuel costs.

(6) Effective August 2015, certain debt carrying costs (associated with certain assets placed in service and other non-construction work in progress accounts) that previously were deferred as regulatory assets are now being recognized through income; however, such costs continue to be included in the current view of project costs in this report. The equity return associated with assets placed in service (a portion of which is being recognized through income effective August 2015) and other non-construction work in progress accounts, as well as debt carrying costs recovered through wholesale rates, are not included in this report.

(7) Incremental operating and maintenance costs related to the combined cycle and associated common facilities placed in service in August 2014. This amount includes a credit for variable operating and maintenance expenses related to energy sales, net of station service.

(8) AFUDC related to the combined cycle and associated common facilities placed in service ceased in August 2014.

(9) Mississippi Power Company has revised its cost estimate subject to the cost cap for the Kemper IGCC to include approximately \$110 million, including approximately \$40 million related to challenges in start-up and commissioning activities, including repairs and modifications to the refractory lining inside the gasifiers, and approximately \$70 million related to the extension of the expected in-service date.

(10) Total Amount Eligible for Recovery under 2012 MPSC Order is net of Mississippi Power Company's estimated loss as a result of exceeding the cost cap of \$2.08 billion. This amount, described in the Overall Project Status below includes estimated costs through August 31, 2015, is based on information available through the filing date, and is subject to review and approval by the MPSC.

(11) Total Amount Eligible for Recovery Under 2012 MPSC Order includes the 15% undivided interest in the Kemper IGCC that was previously projected to be purchased by South Mississippi Electric Power Association (SMEPA). On May 29, 2015, SMEPA notified Mississippi Power Company of its termination of the asset purchase agreement and requested the return of a total of \$275 million of deposits, which was returned with accrued interest on June 3, 2015. Mississippi Power Company is evaluating its alternatives related to the investment and related costs associated with the 15% ownership interest. The outcome of this matter cannot be determined at this time.

Major Items and Milestones Achieved

- The purchase of 2,968 acres for the plant site has been completed.
- Construction is complete for the nitrogen plant, water plant, water storage lake, administrative and electrical buildings, lignite storage dome, electrical ductbanks, concrete installation, structural steel, process piping installation, cable tray, tubing, and underground piping.
- The combined cycle was placed in service on natural gas on August 9, 2014.
- Construction is complete on the three 115kV line rebuild projects. The four new 230kV lines, one new 115kV line, and the mine service line are complete and energized. Construction is complete on eight substations and the Sycamore - Bykas fiber line.
- The treated effluent, natural gas, and CO₂ pipeline installations are 100% complete. Closeout activities remain on all three pipelines.
- Long term contracts have been signed for the sale of CO₂, sulfuric acid, and ammonia. The CO₂ contracts provide termination rights as Mississippi Power has not satisfied its contractual obligation to deliver captured CO₂ by May 11, 2015. Since May 11, 2015, Mississippi Power has been engaged in ongoing discussions with its off-takers regarding the status of the CO₂ delivery schedule as well as other issues related to the respective agreements.
- First Fire on natural gas of Gasifier 'B' Startup Burner achieved on March 1, 2015 and First Fire on natural gas of Gasifier 'A' Startup Burner achieved on March 2, 2015.
- Air Flow Testing - Train 'A' was achieved April 8, 2015, and Air Flow Testing - Train 'B' was achieved May 22, 2015.
- Fluidization Trial - Train 'A' was achieved November 10, 2015.

Mississippi Economic Impact

- Mississippi work force contributed 490 construction jobs in December for the Project. A total of 545 Mississippi companies have provided construction, equipment, material or professional services for the Project.

Overall Project Status

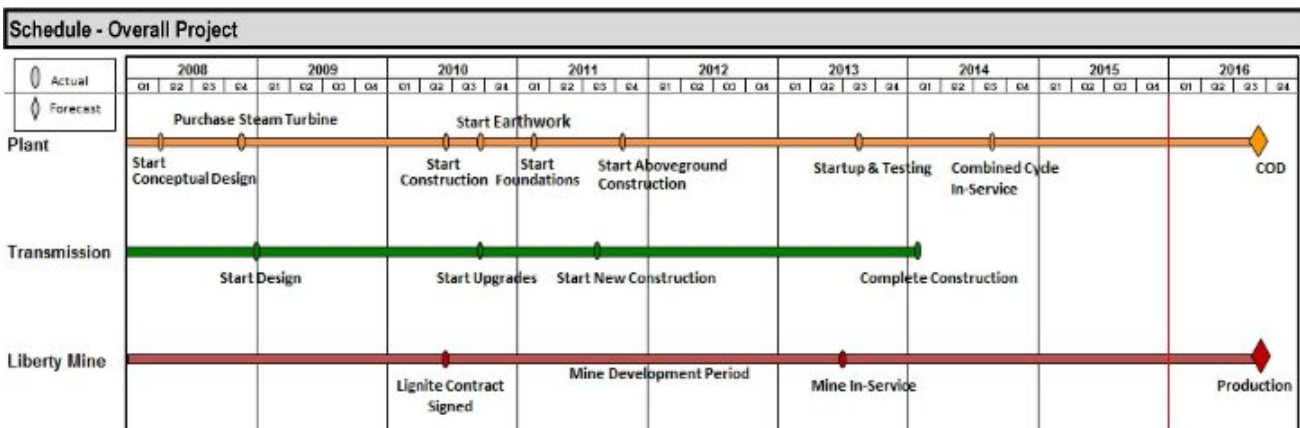
- Mississippi Power placed the combined cycle unit and associated common facilities portion of the Kemper IGCC in service on August 8, 2014.
- Mississippi Power has reviewed the construction, commissioning, and start-up schedule for the Kemper IGCC as the result of challenges in ongoing start-up and commissioning activities, including repairs and modifications to the refractory lining inside the gasifiers, as well as operational readiness, and currently expects that the Kemper IGCC will be placed in service during the third quarter of 2015.

Table 4: Key Contracts Over \$10M

| (in millions of dollars) | Issue Initial Inquiry | Award Date | Current View | Variance from Previous Month |
|--|-----------------------|---|------------------|------------------------------|
| Equipment and Material Contracts Over \$10M (Represents 92% of total equipment and material contracts) | | Dates in BOLD are actual dates; others are forecast dates | \$1,480.6 | (\$1.5) |
| Steam Turbine Generator | Nov-07 | Aug-08 | | |
| Gas Turbines | Dec-08 | Aug-09 | | |
| Heat Recovery Steam Generators | Oct-09 | Jun-10 | | |
| Syngas Coolers | Jan-10 | May-10 | | |
| Transport Gasifiers | Jan-10 | May-10 | | |
| Fluid Bed Dryers | Mar-10 | Jul-10 | | |
| Air Compressors | Apr-10 | Sep-10 | | |
| Nitrogen Generation System | Jun-10 | Dec-10 | | |
| Particulate Control Device (PCD) Systems | Nov-10 | Sep-11 | | |
| Generator Step-up Transformers | Jul-10 | Jan-11 | | |
| Station Service Transformers | Jul-10 | Dec-10 | | |
| Coal Dense Phase Conveyors | Sep-10 | Nov-10 | | |
| Coal Lock Vessels | Aug-10 | Jan-11 | | |
| Water Treatment System | Jul-10 | Feb-11 | | |
| Structural Steel | Sep-10 | Dec-10 | | |
| Heat Exchangers | Apr-10 | Multiple | | |
| Chemical Reactors | Jul-10 | Multiple | | |
| Vessels | Jun-10 | Multiple | | |
| Heat Exchangers | Jul-10 | Multiple | | |
| Compressors | Jun-10 | Multiple | | |
| Catalyst | Jul-10 | Multiple | | |
| Pumps | Jun-10 | Multiple | | |
| Drums | Jan-10 | Multiple | | |
| Unit Chillers | Jul-10 | Multiple | | |
| Construction Piping | Jun-10 | Multiple | | |
| Instrumentation & Controls | Oct-10 | Multiple | | |
| Electrical | Apr-11 | Multiple | | |
| Transmission Line Structures | May-11 | Multiple | | |
| Construction Contracts Over \$10M (Represents 99% of total construction contracts) | | Dates in BOLD are actual dates; others are forecast dates | \$1,928.3 | \$12.5 |
| Cut and Fill Excavation | Jul-10 | Aug-10 | | |
| Underground | Nov-10 | Jan-11 | | |
| Concrete | Nov-10 | Jan-11 | | |
| Gasifier General Contractor | Apr-11 | Jul-11 | | |
| Combined Cycle General Contractor | Oct-11 | Dec-11 | | |
| Water Lateral | Jul-11 | Sep-11 | | |
| Architectural Buildings | Feb-11 | Multiple | | |
| Cooling Tower | Feb-10 | Sep-10 | | |
| Insulation | Jan-12 | Jun-12 | | |
| Field Erected Tanks | Nov-10 | Feb-11 | | |
| Water Storage Pond | Nov-11 | Dec-11 | | |
| Gas Clean-up & By Products | Oct-11 | Dec-11 | | |
| Turbine Generator | Nov-11 | Dec-11 | | |
| HRSG Erection | Aug-11 | Sep-11 | | |
| Piling | Sep-10 | Dec-10 | | |
| Ash Storage | Nov-11 | Dec-11 | | |
| Total | | | \$3,409.0 | \$11.0 |

| Safety | | | |
|--------------------------------|------------------|-----|---|
| OSHA Recordable Incident Rate: | Project to Date: | .44 | Work Hours: Project to Date: 37,041,657 |
| | Year to Date: | .16 | Year to Date: 5,098,320 |

| Schedule - Key 90-Day Milestones | Forecast | Actual | Comments |
|---|----------|--------|-----------------------------------|
| LDF Non-Dome | Feb-16 | | Previously forecasted in Jan-2016 |
| Fluidization Trial - Train B | Feb-16 | | Previously forecasted in Jan-2016 |
| WSA Commissioning | Apr-16 | | Previously forecasted in Feb-2016 |
| Refractory Cure - Train B | Feb-16 | | Previously forecasted in Jan-2016 |
| Lignite Dryers ready for First Lignite Feed | Feb-16 | | |
| AGR Commissioning - Train A | Apr-16 | | Previously forecasted in Feb-2016 |
| Refractory Cure - Train A | Apr-16 | | Previously forecasted in Mar-2016 |
| First Lignite Feed A | Apr-16 | | Previously forecasted in Mar-2016 |
| First Syngas Production - Train A | Apr-16 | | Previously forecasted in Mar-2016 |



| Permits and Approvals | | | | Dates in Bold are actual dates, others are forecast dates | | | |
|---|----------|-----------|----------|--|--|--|--|
| Description | Status | Submittal | Approval | | | | |
| State Groundwater Test Well Permit MS-GW-16425 | Approved | 5/30/07 | 6/26/07 | | | | |
| State NPDES Stormwater Run-off Permit MSR104866 | Approved | 11/13/07 | 3/12/10 | | | | |
| State PSD Air Permit 1380-00017 | Approved | 12/20/07 | 3/12/10 | | | | |
| State Groundwater Production Well Permit MS-GW-16562 | Approved | 5/21/08 | 7/22/08 | | | | |
| MPSC Certificate | Approved | 1/16/09 | 6/3/10 | | | | |
| State Permit to Operate Wastewater Disposal System w/no Discharge Permit MSU009005 ⁽¹⁾ | Approved | 11/19/09 | 3/12/10 | | | | |
| State Dam Safety Approval App. No. 09-041 | Approved | 12/1/09 | 3/23/10 | | | | |
| State Dam Safety Approval App. No. 09-040 | Approved | 12/1/09 | 3/23/10 | | | | |
| FAA stack permit | Approved | 2/8/11 | 3/14/11 | | | | |
| DOE NEPA ROD (CCPI2) | Approved | 11/6/09 | 8/19/10 | | | | |
| State 401 Water Quality Certification | Approved | 10/27/09 | 9/14/10 | | | | |
| USACE 404 Permit for Wetlands SAM-2009-01149-DMY | Approved | 10/27/09 | 11/18/10 | | | | |
| State Solid Waste Management Permit | Approved | 6/11/10 | 11/15/11 | | | | |
| State Dam Safety - Make-up Reservoir | Approved | 6/3/11 | 8/12/11 | | | | |
| State Dam Safety - Retention Pond B | Approved | 6/1/11 | 8/9/11 | | | | |
| Dam Safety LDF Retention Pond Permit | Approved | 10/6/11 | 11/2/11 | | | | |
| NPDES Emergency Discharge Permit | Approved | 12/1/11 | 8/12/14 | | | | |
| NPDES Baseline Industrial Storm Water General Permit | Approved | 5/24/13 | 3/7/14 | | | | |
| Title IV Acid Rain Permit | Pending | 10/13/11 | | | | | |
| Title V Operating Permit | Pending | 8/22/14 | | | | | |
| Risk Management Plan (RMP) | Approved | 4/22/15 | 4/22/15 | | | | |

⁽¹⁾ State Permit to Operate Wastewater Disposal System w/no Discharge Permit MSU009005 was revoked on 8/12/14 due to the approval of the NPDES Emergency Discharge Permit on 8/12/14.

Economic Impact

Table 5: Mississippi Construction, Equipment, Material and Professional Services Companies (Tier 1)

| Company Name | City | Type of Work | Company Name | City | Type of Work |
|--|----------------|-----------------------|--|--------------------|-----------------------|
| 3 D Trucking | Louisville | Professional Service | Brown Printing Company | Meridian | Construction |
| 3point Technologies | Columbus | Professional Service | Brown & Mitchell | Gulfport | Construction |
| 4 County Electric Power Association | Columbus | Construction | Brunini | Jackson | Professional Services |
| A E Allen | Pass Christian | Construction | Buckwalter Stadium Inc. | Meridian | Construction |
| A&B Electric | Meridian | Professional Services | Burford Electric Service, Inc | Columbus | Construction |
| AA Calibration Services | Yazoo City | Professional Service | Burkhalter Rigging Inc | Columbus | Construction |
| ABF Freight | Jackson | Material | Burk's Aviation | Hattiesburg | Professional Services |
| Accu-Fab & Construction, Inc | Moss Point | Material | Business Interiors | Jackson | Professional Services |
| ADCO Companies Ltd | Brandon | Equipment | Can't Be Beat Fencing | Perkinston | Construction |
| Advanced Mold Professionals LLC | Lake | Professional Service | Capital Concrete Cutting Inc | Clinton | Materials |
| AES Limited PC | Meridian | Construction | Capitol Hardware Company, Inc. | Jackson | Professional Services |
| Aggreko Cooling Tower Service | Ridgeland | Equipment | Carter Miller Associates | Meridian | Professional Services |
| Air Center of Mississippi | Jackson | Material | Cavco, Inc | Bailey | Construction |
| Air Management, LLC | Meridian | Construction | Central Culvert & Pipe | Philadelphia | Material |
| Air Tool Supply | West Point | Material | Central Mississippi Communications | Kosciusko | Professional Services |
| Airgas South | Meridian | Construction | Central Office Supply | Kosciusko | Construction |
| AJA Management | Jackson | Professional Services | Central Pipe Supply Inc | Jackson | Material |
| AI Covington / Bill Oubre | Meridian | Construction | Chain Electric Co. | Hattiesburg | Construction |
| All Brand Foods | Hattiesburg | Professional Services | Chancellor Supply | Laurel | Material |
| All Clean Janitorial | DeKalb | Professional Services | Chet's Paint & Body Shop | Meridian | Professional Services |
| All Safe Technologies | Gulfport | Professional Services | Chevron Products | Moss Point | Equipment |
| All Star Printing | Columbus | Materials | Chris Haynes Electric Supply | Jackson | Materials |
| Almetek Industries Inc | Ridgeland | Material | Cintas Corporation | Jackson & Meridian | Construction |
| American Controls | Amory | Material | Cintas FAS | Jackson | Professional Services |
| American Fire & Safety | Laurel | Professional Services | City of Meridian | Meridian | Professional Services |
| American Forest Management | Meridian | Professional Services | Gives Steel Co. | Rosedale | Material |
| American Rental | Philadelphia | Construction | Collins and Null | Hattiesburg | Professional Services |
| American Supply Co Inc | Jackson | Material | Collinsville Hardware | Meridian | Material |
| Anderson Retail | Hattiesburg | Material | Columbus Rubber & Gasket | Columbus | Construction |
| APAC Mississippi Inc | Jackson | Construction | Commercial Interiors | Long Beach | Professional Services |
| Appraisal Group | Philadelphia | Professional Services | Complete Industrial Solutions LLC | Vandave | Construction |
| Appraisers Associated Ltd. | Meridian | Professional Services | Comsouth | Meridian | Professional Services |
| Aquaterra Engineering LLC | Madison | Professional Services | Consolidated Electrical Distributors Inc | Gulfport | Material |
| Argus Analytical | Jackson | Professional Services | Consolidated Pipe & Supply Co | Pascagoula | Material |
| Asplundh Tree Expert Co | D'Iberville | Construction | Contract Fabricators, Inc. | Holly Springs | Equipment |
| Atwood Fence | Kosciusko | Construction | Cornett Bolt & Screw | Gulfport | Material |
| B Clean | Laurel | Professional Services | CSS Document Solutions | Meridian | Professional Services |
| Baker Ready Mix | Louisville | Material | CTC, Inc | Louisville | Material |
| Balch & Bingham, LLP | Gulfport | Professional Services | Cuevas Auction, LLC | Picayune | Professional Services |
| Barnhart Crane & Rigging | Jackson | Construction | Custom Creations and More | Meridian | Construction |
| Bay Pest Control | Ocean Springs | Professional Services | D&E Construction Co Inc | Meridian | Construction |
| Bayou Management Inc | Columbus | Professional Services | DACO LLC | Columbus | Professional Services |
| Beckham Concrete Cutting, LLC | Perkinston | Construction | Daily Equipment Co Inc | Jackson | Construction |
| Bellavilla Community Club | Bailey | Construction | David L. Moon | Collinsville | Construction |
| Bengal Resources and Associates, Inc. | Columbia | Professional Services | Davidson Hauling & Constriction | Marion | Material |
| Betty Luke | Bailey | Professional Services | Davis Trailer | Moselle | Construction |
| Bill Oakley Consulting Hydrologist, Inc. | Brandon | Professional Services | Deep South Services LLC | Hickory | Material |
| Bill's Trailer Sales | Ackerman | Materials | Design Precast and Pipe | Gulfport | Construction |
| Black Brothers, Inc. | Ackerman | Construction | Dibs Chemical & Supply | Gulfport | Construction |
| Blackwell Shepards Locksmith | Meridian | Professional Services | Dickerson Petroleum | Kosciusko | Construction |
| Blaine's Trailer Rental & Sale | Richland | Construction | Ditch Witch of Mississippi | Pearl | Construction |
| BMI Environmental Services | Gulfport | Professional Services | Dixie Mat & Hardwood Co Inc | Sandy Hook | Material |
| Bonds of Love Ministries | DeKalb | Construction | Document Storage Solutions | Jackson | Construction |
| Briggs Equipment | Jackson | Construction | Doug Jones & Son Construction Co | Meridian | Construction |
| Broadmoor Home | Meridian | Construction | Douglas Inc. | Jackson | Professional Service |

continued on page 5

Economic Impact (continued from page 4)

Table 5: (continued) Mississippi Construction, Equipment, Material and Professional Services Companies (Tier 1)

| Company Name | City | Type of Work | Company Name | City | Type of Work |
|--|--------------|-----------------------|---------------------------------------|--------------|-----------------------|
| Dowdle Gas Company | DeKalb | Construction | HD Supply Waterworks LTD | Pearl | Material |
| Dr. David Lang, PhD | Starkville | Professional Services | Heartland Pump Rental & Sales Inc | Horn Lake | Construction |
| DZ Atlantic | Moss Point | Equipment | Heblon Heating & Air Conditioning | Meridian | Construction |
| E. Patrick Cassidy & Associates Inc. | Gulfport | Professional Services | Hemphill Construction | Florence | Construction |
| Earl Dudley Associated | Jackson | Construction | Henderson Steel Corp | Merion | Construction |
| East Mississippi Electric Power Assoc. | Meridian | Construction | Herring Gas Co Inc. | Philadelphia | Construction |
| ECO Systems (now Allen Eng. & Science) | Jackson | Professional Services | Hi Grade Gin Corporation | Winona | Construction |
| Eddie Briggs, Attorney at Law | Madison | Professional Services | Hilton Spears Custom Cabinets | Philadelphia | Construction |
| Educational Furniture & Equipment Co. | Meridian | Construction | HJM Forest Resource Management | DeKalb | Professional Services |
| Eley Guild Hardy Architects | Biloxi | Professional Services | Holiday Construction | Poplarville | Construction |
| Endom Welding & Trailer Repair | Ellisville | Construction | Holloway Termite & Pest Services | Meridian | Professional Services |
| Engineering Plus | Meridian | Professional Services | Hooper Electronics | Pascagoula | Material |
| Engineering Services | Jackson | Professional Services | Hotel & Restaurant Supply | Meridian | Material |
| Eutaw Construction | Aberdeen | Construction | Howard Industries | Laurel | Equipment |
| F L Clayton Trust | Meridian | Construction | HRD Safety | Jackson | Material |
| Faison Office Products Co LLC | Gulfport | Construction | Hughes Brothers Inc | Jackson | Material |
| Fastenal | Philadelphia | Material | Ice Plant | Meridian | Construction |
| FC&E Engineering LLC | Brandon | Professional Services | Industrial Commercial Fire Protection | Lucedale | Construction |
| Ferguson Enterprises | Jackson | Equipment | Industrial Electric Motor Works Inc | Meridian | Professional Services |
| Firestone | Meridian | Professional Services | Industrial Machine & Manufacturing | Meridian | Professional Services |
| Fish and Fisher | Jackson | Construction | Industrial Steel Corp. | Jackson | Construction |
| Fluid Process & Pumps | Florence | Material | Infolab, LLC | Clarksdale | Professional Services |
| Forest Services, Inc. | Pelahatchie | Professional Services | Ivy Consulting | Quitman | Professional Services |
| Forestry Suppliers | Brandon | Construction | J & J Contractors | Collinsville | Professional Services |
| Fralley Dozer Service | Collins | Construction | J W Lee Company, Inc | Gulfport | Equipment |
| Fulton Line Service | Preston | Construction | Jabez Group, LLC | Madison | Professional Services |
| G & K Services | Jackson | Professional Services | Jackson Bolt & Screw | Jackson | Material |
| G & O Supply Co. Inc. | Houston | Material | James Self Inc dba JSI Communication | Pearl | Material |
| Gary G. Williams, Appraisals | Flowood | Professional Services | JH Haynes Electric Co Inc | Gulfport | Professional Services |
| Genesis Telecommunications | Collinsville | Professional Services | Joe McGee Construction | Lake | Construction |
| GEO Products | Madison | Material | John B. Stewart Real Estate Appraiser | Canton | Professional Services |
| George's Auto Parts | Meridian | Construction | John C Stennis Memorial Hospital | DeKalb | Professional Services |
| Geotechnical Engineering Assoc. | Ridgeland | Professional Services | John Fayard Moving & Warehousing, LLC | Gulfport | Materials |
| Gipson Steel Inc | Meridian | Construction | John's Welding | Meridian | Professional Services |
| Glass Inc. | Meridian | Material | Johnson Surveying | Collinsville | Professional Services |
| Glassworx | Philadelphia | Material | K. C. Garbage & Solid Waste | DeKalb | Construction |
| Glenn Hollingsworth Enterprise LLC | Hickory | Construction | Kelly Services | Gulfport | Professional Services |
| Glenn Machine Works | Columbus | Construction | Kemper Construction Supply | DeKalb | Material |
| Glover Young Walton & Simmons, PLLC | Meridian | Professional Services | Kemper County Landfill | DeKalb | Professional Services |
| Godwin Group | Jackson | Professional Services | Kemper County Messenger | DeKalb | Professional Services |
| Goforth Forest Management, Inc. | Meridian | Professional Services | Kemper Electric Supply | DeKalb | Material |
| GraRock Trucking | Macon | Construction | Kennedy Construction | Meridian | Construction |
| Greenway Construction | Wiggins | Construction | Knesal Engineering Services, Inc. | Gulfport | Professional Services |
| Guice Marketing & Consulting | Biloxi | Professional Services | Knowles Material Co | Jackson | Material |
| Gulf Coast Fence | Pascagoula | Construction | L & M Carpet Cleaning | Meridian | Professional Services |
| Gulf Office Systems Inc | Saucier | Professional Services | Lauderdale County Farm Supply | Meridian | Materials |
| Gulf Sales & Supply | Pascagoula | Construction | Laurel Ford | Laurel | Equipment |
| Gulf South Survey & Environmental | Biloxi | Professional Services | Laurel Machine & Foundry Co | Laurel | Materials |
| H & H Chief Sales | Carthage | Construction | Lawyers PLLC | Meridian | Professional Services |
| H & H Construction | Greenwood | Construction | Layne Christenson | Jackson | Construction |
| H & P Leasing, Inc. | Flowood | Construction | LPK Architects | Meridian | Professional Services |
| Hampton & Associates Law Office | DeKalb | Professional Services | Luke Printing Company | Meridian | Professional Services |
| Hanson | Gulfport | Construction | Lyle Machinery Company | Jackson | Equipment |
| Hargrove Engineers Constructors | Pascagoula | Professional Services | M G Dyess Inc | Bassfield | Construction |
| Havard Pest Control | Hattiesburg | Professional Services | M&M Holdings | Kilmichael | Materials |

continued on page 6

Economic Impact (continued from page 5)

Table 5: (continued) Mississippi Construction, Equipment, Material and Professional Services Companies (Tier 1)

| Company Name | City | Type of Work | Company Name | City | Type of Work |
|--|---------------|-----------------------|------------------------------------|--------------|-----------------------|
| Magnolia Steel Co, Inc. | Meridian | Professional Services | Pettigrew Forestry Consultants | Kiln | Professional Services |
| Mailroom Consultants | Jackson | Professional Services | Pickering & Associates | Jackson | Professional Services |
| Malouf | Greenwood | Construction | Plan House Printing and Graphics | Tupelo | Professional Services |
| Mar-Com Comm, Inc. | Decatur | Construction | Powell Transportation | Columbia | Material |
| Marion Water Department | Marion | Construction | Preformed Line Products Co | Ridgeland | Material |
| Mars Manufactured Homes | Meridian | Construction | Print Plus | Meridian | Professional Services |
| Martin Supply (MISCO) | Saltillo | Materials | Pritchard Engineering | Starkville | Professional Services |
| Martin Truck & Tractor | Columbus | Construction | Pro Turf, Inc. | Winona | Construction |
| Marvin's | Meridian | Material | Procall Services | Biloxi | Professional Services |
| Mary Joyce Angero | Meridian | Construction | Progressive Pipeline | Meridian | Construction |
| Max Floor Specialist | Brandon | Professional Services | ProModular | Jackson | Construction |
| McCrary Construction Services | Columbus | Construction | Provine Helicopter Service, Inc. | Greenwood | Professional Services |
| McElroy Plumbing & Heating | Meridian | Construction | Puckett Machinery Co | Jackson | Construction |
| Medical Foundation (Rush Hospital) | Meridian | Professional Services | Puckett Rents Inc | Jackson | Construction |
| MEI Electrical Inc | Philadelphia | Construction | Quality Welding & Fabrication | Columbia | Equipment |
| Melvin Chaney Jr Real Estate Appraiser | Madison | Professional Services | Ralph L. Morgan | Meridian | Material |
| Mercury Aviation Inc | Flowood | Professional Services | Richard R. Hite Appraisal, LLC | Canton | Professional Services |
| Meridian Community College | Meridian | Professional Services | Robert's Sewing Machine Parts | Meridian | Professional Services |
| Meridian Personnel Service | Meridian | Professional Services | Robinson Electric Supply Co Inc | Meridian | Material |
| Meridian Tire & Brake | Meridian | Professional Services | Roto-Rooter Sewer & Drain | Meridian | Professional Services |
| Micro Methods Laboratory Inc | Ocean Springs | Professional Services | RMKPC, Inc dba Orkin | Meridian | Professional Services |
| Mid South Welding | Meridian | Construction | Robine & Welch Machine & Tool Co. | Laurel | Construction |
| Mikropul | Iuka | Equipment | Rush Care | Meridian | Professional Services |
| Miller Enterprises | Hattiesburg | Construction | Ryan Motors Inc | Hattiesburg | Construction |
| MillerCo Inc. | Gulfport | Construction | S&S Welding | Ellisville | Professional Services |
| Milton's A/C Service | DeKalb | Construction | Sam Oswalt & Son, Inc. | Starkville | Construction |
| Mississippi Beverage Water, LLC | Meridian | Construction | Sanders Air & Heat | Meridian | Professional Services |
| Mississippi Department of Transportation | Jackson | Construction | Sanders Gas | Meridian | Construction |
| Mississippi Gauge & Supply, Inc. | Meridian | Materials | Sequel Electrical Supply | Meridian | Material |
| Mississippi State University | Starkville | Professional Services | Service Master | Marion | Professional Services |
| Missouth Vital Records | Meridian | Professional Services | Sherwin Williams | Meridian | Material |
| Mitchell Sign, Inc. | Meridian | Professional Services | Sign's Plus of Meridian | Meridian | Construction |
| MMC Material | Meridian | Construction | Simmons Wrecker Service, Inc. | Meridian | Professional Services |
| Modern Landscape Design | Meridian | Professional Services | Singley Construction Co | Columbia | Construction |
| Modular Space Corp | Jackson | Construction | Sirmon & Associates | Pelahatchie | Professional Services |
| Motion Industries | Meridian | Materials | Slay Steel Inc | Meridian | Material |
| Mowdy Cabinetry | Meridian | Professional Services | South Mississippi Hydroseeding | Wiggins | Construction |
| MSC Industrial | Meridian | Materials | Southern Business Supply | Meridian | Construction |
| Necaise Locksmith Service | Gulfport | Materials | Southern Chevrolet | DeKalb | Construction |
| Neel Schaffer | Jackson | Professional Services | Southern Colonel Homes Inc | Hattiesburg | Construction |
| Nehring | Ridgeland | Material | Southern Hose & Industrial | Jackson | Material |
| Newell Paper Company | Meridian | Materials | Southern Natural Resources, Inc. | Stewart | Professional Services |
| NGK Locke Inc | Ridgeland | Material | Southern Pine Electric | Taylorsville | Equipment |
| NL Carson | Carthage | Construction | Southern Pipe & Supply Co Inc | Gulfport | Material |
| North Mississippi Medical Center | Eupora | Professional Services | Southern Surveyors Group LLC | Gulfport | Professional Services |
| Northwest Kemper Water Association | Preston | Construction | Southern Tire Mart | Meridian | Construction |
| Office Furniture Jackson CIN | Ridgeland | Construction | Southern Waste Disposal | Meridian | Construction |
| Office Innovations | Ridgeland | Construction | SPCS Inc | Gulfport | Professional Services |
| ORR Safety Corp | Jackson | Material | Specialty Fencing | Meridian | Construction |
| Pac Services | Biloxi | Professional Services | Specialty Fuel | Kosciusko | Construction |
| Patrick Allen Garage Door Co. | Meridian | Construction | Starkville Computers | Starkville | Construction |
| Pearson Services | Louisville | Construction | Stevie Holiday | DeKalb | Professional Services |
| Perfect Touch Contractors LLC | DeKalb | Construction | Stewart Environmental Construction | Tupelo | Construction |
| Perma R Products | Grenada | Material | Stribling Equipment | Jackson | Construction |
| Peterbilt Truck Center | Jackson | Construction | Strickland Companies | Columbus | Construction |

continued on page 7

**Mississippi Power
Kemper County IGCC Project**

**Total Project
Mississippi Economic Impact**

**MPSC Docket No. 2009-UA-0014
Monthly Status Report
Through December 2015**

Economic Impact (continued from page 6)

Table 5: (continued) Mississippi Construction, Equipment, Material and Professional Services Companies (Tier 1)

| Company Name | City | Type of Work | Company Name | City | Type of Work |
|---|------------------|-----------------------|--------------------------------|-------------------|-----------------------|
| Structural Steel Services | Meridian | Material | Waste Management | Tupelo & Meridian | Professional Services |
| Stuart C. Irby Co. | Meridian/Jackson | Material | Waste Pro of MS | Meridian | Professional Services |
| Sturgis Mat | Ackerman | Material | Waters International | Meridian | Material |
| Sudden Service | Louisville | Construction | Waters Truck & Tractor | Kosciusko | Construction |
| Sunbelt Equipment Marketing | Meridian | Construction | Waterstone Business Strategies | Brandon | Professional Services |
| Sunbelt Insulation | Lucedale | Material | Watson Quality Ford | Jackson | Construction |
| Sutton Lumber | Meridian | Material | Watt Equipment | DeKalb | Construction |
| Suzu Q Monogramming Screenprinting | Philadelphia | Construction | Willkerson Construction | DeKalb | Construction |
| Swetman Security Service, Inc | Biloxi | Professional Service | William Clay | DeKalb | Construction |
| System Scale | Jackson | Equipment | Woodall Electric Inc | Meridian | Professional Services |
| TK Stanley | Waynesboro | Material | Woodstock Furniture | Meridian | Construction |
| Taylor Machine Works | Louisville | Construction | Working Solutions | Meridian | Professional Services |
| Tencarva Machinery | Jackson | Construction | Yard Services | Meridian | Professional Services |
| Terracon Consultants | Madison | Professional Services | | | |
| The 1869 Group LLC | Jackson | Construction | | | |
| The Bolt Co dba Henderson Bolt | Meridian | Material | | | |
| The McGinnis Lumber Company | Meridian | Material | | | |
| The Service Company of Mississippi | Meridian | Professional Services | | | |
| The Sign Doctor | Meridian | Material | | | |
| Thomas Refrigeration | Meridian | Professional Services | | | |
| Threaded Fasteners | Gulfport | Material | | | |
| Thomasson Company | Philadelphia | Construction | | | |
| Tice Engineering | Wiggins | Professional Services | | | |
| Tim Parker Construction | Soso | Construction | | | |
| Timber Craft, Inc. | DeKalb | Professional Services | | | |
| Tolbert Chevrolet | Philadelphia | Construction | | | |
| Tooney's Tire Center | DeKalb | Professional Services | | | |
| Town of DeKalb | DeKalb | Construction | | | |
| Town of Marion | Marion | Construction | | | |
| Traffic Control Products Company | Brandon | Construction | | | |
| Tri-State Consulting Services | Philadelphia | Professional Services | | | |
| Truckers Supply | Meridian | Construction | | | |
| TST&E, LLC | Carriere | Construction | | | |
| Tull Brothers | Meridian | Construction | | | |
| U Save Car & Truck Rental | Meridian | Construction | | | |
| Underwood Sales Inc | Ovett | Construction | | | |
| United Fence | Meridian | Construction | | | |
| United Rentals N.A. (formerly RSC Eqmt) | Meridian | Construction | | | |
| Vice Brothers Unlimited | Moss Point | Material | | | |
| Vice Construction Co. | Moss Point | Construction | | | |
| Vick's Paint & Body Shop | DeKalb | Professional Services | | | |
| Volvo Rents | Hattiesburg | Construction | | | |
| Vulcan | Laurel | Material | | | |
| W G Yates & Sons Construction | Biloxi | Construction | | | |
| W.L. Cook | Bailey | Professional Services | | | |
| Walker Audio | Biloxi | Professional Services | | | |
| Walley Forestry | Ellisville | Professional Services | | | |
| Waring Oil Company LLC | Vicksburg | Material | | | |

Total Mississippi Contracts - Tier 1 and Tier 2 (in millions of dollars) **\$1,826**
Total Mississippi Spend through December 2015 - Tier 1 and Tier 2 (in millions of dollars) **\$1,810**

| | | | |
|------------------------------|--------------|-------------|--------------|
| Mississippi Workforce | Plant | Mine | Total |
| Construction Jobs | 460 | 0 | 460 |
| Plant/Mine Jobs | 220 | 106 | 326 |

Mine Status

The surface coal mining and water pollution control permits for the Liberty Mine were approved by the MDEQ Permit Board on December 13, 2011. Liberty Mine began commercial operations on June 5, 2013. The dragline was placed in service on November 15, 2013. Construction activities are complete for the mine.

Table 6: Mine Costs (in millions of dollars)

| Cost Category | Current View | Actuals through December 2015 |
|-----------------------------|----------------|-------------------------------|
| Development | \$80.2 | \$80.2 |
| Land and Mineral Leases | 29.2 | 29.2 |
| Equipment | 106.3 | 106.3 |
| Mine AFUDC | 16.5 | 16.5 |
| TOTAL ⁽¹⁾ | \$232.2 | \$232.2 |

(1) The Liberty Mine was placed in service in June 2013. Construction costs incurred since that date are reported above as Mine costs. Operational costs incurred since the mine was placed in service are not included in this report. These costs are considered to be post-COD capital and fuel inventory costs and will be subject to MPUS and MPSC oversight in conjunction with the annual review of fuel costs.

Mine Safety

Recordable Incident Rate: 1.08 Project to Date Work Hours: 925,492

Mine Permits and Approvals

Dates in **Bold** are actual dates, others are forecast dates

| Description | Status | Submittal | Approval |
|--|---|-----------|----------|
| 401 Water Quality Certification | Approved | 8/9/10 | 9/14/10 |
| 404 USCAE Permit | Approved | 8/9/10 | 12/10/10 |
| MSHA Sedimentation Pond (Revision to include pond) | Approved | 8/29/13 | 6/23/14 |
| MSHA Mine Identification Number | Approved | 12/7/10 | 12/8/10 |
| State mine permit (SMCRA) | Approved | 1/18/11 | 12/14/11 |
| NPDES permit | Approved | 3/1/11 | 12/14/11 |
| State Dam Construction Permit | Approved | 3/18/11 | 6/29/11 |
| State Stormwater Permit | Approved | 11/23/11 | 1/27/12 |
| SPCC Plan | Approved | 3/30/12 | 3/30/12 |
| State Wastewater Discharge (Sewage) | Not required; zero discharge system planned | | |
| Dragline FAA permit | Approved | 7/9/12 | 8/13/12 |