

UNITED STATES
SECURITIES AND EXCHANGE COMMISSION

Washington, D. C. 20549

FORM 8-K

CURRENT REPORT

Pursuant to Section 13 or 15(d) of the Securities Exchange Act of 1934

Date of Report (Date of earliest event reported) July 26, 2016

<u>Commission File Number</u>	<u>Registrant, State of Incorporation, Address and Telephone Number</u>	<u>I.R.S. Employer Identification No.</u>
1-3526	The Southern Company (A Delaware Corporation) 30 Ivan Allen Jr. Boulevard, N.W. Atlanta, Georgia 30308 (404) 506-5000	58-0690070
001-11229	Mississippi Power Company (A Mississippi Corporation) 2992 West Beach Gulfport, Mississippi 39501 (228) 864-1211	64-0205820

The names and addresses of the registrants have not changed since the last report.

This combined Form 8-K is filed separately by two registrants: The Southern Company and Mississippi Power Company. Information contained herein relating to each registrant is filed by each registrant solely on its own behalf. Each registrant makes no representation as to information relating to the other registrant.

Check the appropriate box below if the Form 8-K filing is intended to simultaneously satisfy the filing obligation of the registrants under any of the following provisions:

- ☐ Written communications pursuant to Rule 425 under the Securities Act (17 CFR 230.425)
 - ☐ Soliciting material pursuant to Rule 14a-12 under the Exchange Act (17 CFR 240.14a-12)
 - ☐ Pre-commencement communications pursuant to Rule 14d-2(b) under the Exchange Act (17 CFR 240.14d-2(b))
 - ☐ Pre-commencement communications pursuant to Rule 13e-4(c) under the Exchange Act (17 CFR 240.13e-4(c))
-

The Southern Company (“Southern Company”) and Mississippi Power Company (“Mississippi Power”) are filing this Current Report on Form 8-K to provide information regarding the schedule and cost estimate for Mississippi Power’s integrated coal gasification combined cycle project in Kemper County, Mississippi (the “Kemper IGCC”) and the related recognition of charges to income.

The information in Items 2.02 and 7.01 in this Current Report on Form 8-K, including the exhibit attached hereto, shall not be deemed “filed” for purposes of Section 18 of the Securities Exchange Act of 1934, as amended, or otherwise subject to the liabilities under that Section. Furthermore, such information, including the exhibit attached hereto, shall not be deemed to be incorporated by reference in any filing under the Securities Act of 1933, as amended, except as shall be expressly set forth by specific reference in such filing.

Item 2.02. Results of Operations and Financial Condition.

The information set forth below in Item 8.01 related to the updated cost estimate for completing the Kemper IGCC and the related recognition of charges to income is incorporated by reference into this Item 2.02.

Item 7.01. Regulation FD Disclosure.

On July 26, 2016, Mississippi Power submitted its Kemper County Integrated Coal Gasification Combined Cycle Project Monthly Status Report through June 2016 (the “June PSC Report”) to the Mississippi Public Service Commission (the “Mississippi PSC”) pursuant to Docket No. 2009-UA-14. A copy of the June PSC Report is furnished as Exhibit 99.01 to this Current Report on Form 8-K. The June PSC Report includes information regarding the cost estimate and projected schedule for the Kemper IGCC, including the schedule for the “A” and “B” gasifiers.

Item 8.01. Other Matters.

See MANAGEMENT’S DISCUSSION AND ANALYSIS - FINANCIAL CONDITION AND LIQUIDITY - “Capital Requirements and Contractual Obligations” of Southern Company, MANAGEMENT’S DISCUSSION AND ANALYSIS - FUTURE EARNINGS POTENTIAL - “Integrated Coal Gasification Combined Cycle” and - FINANCIAL CONDITION AND LIQUIDITY - “Capital Requirements and Contractual Obligations” of Mississippi Power, and Note 3 to the financial statements of Southern Company and Mississippi Power under “Integrated Coal Gasification Combined Cycle” in Item 8 of each company’s Annual Report on Form 10-K for the fiscal year ended December 31, 2015 (the “Form 10-K”). See also MANAGEMENT’S DISCUSSION AND ANALYSIS - FINANCIAL CONDITION AND LIQUIDITY - “Capital Requirements and Contractual Obligations” of Mississippi Power, MANAGEMENT’S DISCUSSION AND ANALYSIS - FUTURE EARNINGS POTENTIAL - “Integrated Coal Gasification Combined Cycle” of Mississippi Power, and Note (B) to the Condensed Financial Statements under “Integrated Coal Gasification Combined Cycle” in each company’s Quarterly Report on Form 10-Q for the quarter ended March 31, 2016 for additional information regarding the construction of the Kemper IGCC, including: (1) the cost cap set by the Mississippi PSC of \$2.88 billion, net of \$245 million of grants awarded to the project by the U.S. Department of Energy under the Clean Coal Power Initiative Round 2 (the “Initial DOE Grants”) and excluding the cost of the lignite mine and equipment, the cost of the carbon dioxide pipeline facilities, allowance for funds used during construction (“AFUDC”), and certain general exceptions, including change of law, force majeure, and beneficial capital (which exists when Mississippi Power demonstrates that the purpose and effect of the construction cost increase is to produce efficiencies that will result in a neutral or favorable effect on customers relative to the

original proposal for the Certificate of Public Convenience and Necessity) (the “Cost Cap Exceptions”) and (2) the expected in-service date and related cost estimate.

The total estimated Kemper IGCC cost subject to the \$2.88 billion cost cap as of June 30, 2016 was approximately \$5.38 billion, net of the Initial DOE Grants and excluding the Cost Cap Exceptions. Mississippi Power does not intend to seek rate recovery for any costs related to the construction of the Kemper IGCC that exceed the \$2.88 billion cost cap, net of the Initial DOE Grants and excluding the Cost Cap Exceptions. As a result of this revised cost estimate, Southern Company and Mississippi Power recorded total pre-tax charges to income for the estimated probable losses on the Kemper IGCC of approximately \$38 million (\$23 million after-tax) during the second quarter 2016.

Mississippi Power’s analysis of the time needed to complete the start-up and commissioning activities for the Kemper IGCC will continue until the remaining Kemper IGCC assets are placed in service, which has been previously disclosed as expected to occur by September 30, 2016. Significant testing activities, including those for coal feed and gasification systems, as well as the initial operation and testing of the facility’s gas clean-up systems and production of clean syngas, and, ultimately the generation of electricity, are in process. These tests are scheduled to continue in the coming days. Based on the results of these tests, Mississippi Power will include any necessary schedule impact in the Quarterly Report on Form 10-Q for the quarter ended June 30, 2016. Further cost increases and/or extensions of the expected in-service date may result from factors including, but not limited to, difficulties integrating the systems required for sustained operations, major equipment failure, unforeseen engineering or design problems including any repairs and/or modifications, and/or operational performance (including additional costs to satisfy any operational parameters ultimately adopted by the Mississippi PSC). Any further changes in

the estimated costs to complete construction and start-up of the Kemper IGCC subject to the \$2.88 billion cost cap, net of the Initial DOE Grants and excluding the Cost Cap Exceptions, will be reflected in Southern Company's and Mississippi Power's statements of income and these changes could be material.

Any extension of the in-service date beyond September 30, 2016 is currently estimated to result in additional base costs of approximately \$25 million to \$35 million per month, which includes maintaining necessary levels of start-up labor, materials, and fuel, as well as operational resources required to execute start-up and commissioning activities. However, additional costs may be required for remediation of any further equipment and/or design issues identified. Any extension of the in-service date would also increase costs for the Cost Cap Exceptions, which are not subject to the \$2.88 billion cost cap established by the Mississippi PSC. These costs include AFUDC, which is currently estimated to total approximately \$14 million per month, as well as carrying costs and operating expenses on Kemper IGCC assets placed in service and consulting and legal fees of approximately \$3 million per month.

The ultimate outcome of this matter cannot be determined at this time.

Exhibit

Exhibit 99.01 Kemper County Integrated Coal Gasification Combined Cycle Project Monthly Status Report through June 2016 to the Mississippi Public Service Commission submitted by Mississippi Power Company pursuant to Docket No. 2009-UA-14.

Cautionary Note Regarding Forward-Looking Statements

Certain information contained in this Current Report on Form 8-K and the June PSC Report is forward-looking information based on current expectations and plans that involve risks and uncertainties. Forward-looking information includes, among other things, statements concerning the projected cost and schedule for the completion of construction and start-up of the Kemper IGCC. Southern Company and Mississippi Power caution that there are certain factors that could cause actual results to differ materially from the forward-

looking information that has been provided. The reader is cautioned not to put undue reliance on this forward-looking information, which is not a guarantee of future performance and is subject to a number of uncertainties and other factors, many of which are outside the control of Southern Company and Mississippi Power; accordingly, there can be no assurance that such suggested results will be realized. The following factors, in addition to those discussed in the Form 10-K and subsequent securities filings, could cause actual results to differ materially from management expectations as suggested by such forward-looking information: changes in tax and other laws and regulations to which Mississippi Power is subject as well as changes in application of existing laws and regulations; the ability to control costs and avoid cost overruns during the development and construction of facilities, which include the development and construction of generating facilities with designs that have not been finalized or previously constructed, including changes in labor costs and productivity, adverse weather conditions, shortages and inconsistent quality of equipment, materials, and labor, contractor or supplier delay, non-performance under operating or other agreements, operational readiness, including specialized operator training and required site safety programs, unforeseen engineering or design problems, start-up activities (including major equipment failure and system integration), and/or operational performance (including additional costs to satisfy any operational parameters ultimately adopted by the Mississippi PSC); the ability to construct facilities in accordance with the requirements of permits and licenses, to satisfy any environmental performance standards and the requirements of tax credits and other incentives, and to integrate facilities into the Southern Company system upon completion of construction; advances in technology; actions related to cost recovery for the Kemper IGCC, including the ultimate impact of the 2015 decision of the Mississippi Supreme Court, the Mississippi PSC's December 2015 rate order, and related legal or regulatory proceedings, Mississippi PSC review of the prudence of Kemper IGCC costs and approval of further permanent rate recovery plans, actions relating to proposed securitization, satisfaction of requirements to utilize grants, and the ultimate impact of the termination of the proposed sale of an interest in the Kemper IGCC to South Mississippi Electric Power Association; and the ability of counterparties of Mississippi Power to make payments as and when due and to perform as required. Southern Company and Mississippi Power expressly disclaim any obligation to update any forward-looking information.

SIGNATURE

Pursuant to the requirements of the Securities Exchange Act of 1934, each of the registrants has duly caused this report to be signed on its behalf by the undersigned hereunto duly authorized.

Date: July 26, 2016

THE SOUTHERN COMPANY

By /s/Melissa K. Caen
Melissa K. Caen
Corporate Secretary

MISSISSIPPI POWER COMPANY

By /s/Melissa K. Caen
Melissa K. Caen
Assistant Secretary

Project Costs and Summary	1
Key Contracts Over \$10M	2
Project Updates	3
Safety	
Schedule	
Permits and Approvals	
Mississippi Economic Impact	4
Liberty Mine Summary	8

Mississippi Power Kemper County IGCC Project

Project Costs and Summary Total Project ⁽¹⁾

MPSC Docket No. 2009-UA-0014 Monthly Status Report Through June 2016

Table 1: Capped Plant Costs (in millions of dollars)

Cost Category	Current View	Variance From Previous Month	Actuals through June 2016	Confirmed Cost: %
Land	\$32.4	(\$0.0)	\$32.4	100%
EPC	4,346.8	0.0	4,304.5	98%
Transmission	93.9	0.0	93.9	100%
Fuel Facilities	155.4	(0.1)	153.5	100%
Pre-Commercial Operations	810.2	3.8	738.2	89%
CC & Related Assets Placed in Service - Non-Incremental ⁽²⁾	31.7	0.3	28.7	91%
Project Development	76.6	3.9	70.7	92%
Start Up Fuel Energy	49.2	4.1	15.1	31%
DOE CCRP2 Funding	(245.3)	0.0	(245.3)	
Ad Valorem	28.3	0.0	28.1	98%
Schedule Risk	35.0	0.0	0.0	
Contingency	28.0	(8.1)	0.0	
Total Plant ⁽³⁾	5,440.4	0.0	5,215.5	
Deduction for Cap Exceptions (BC/FM/CIL) ⁽⁴⁾	(55.6)	0.0	(55.6)	
Total Plant Subject to Cost Cap	\$5,384.5	\$8.0	\$5,159.7	96%

Table 2: Exemptions and Exceptions (in millions of dollars)

Cost Category	Current View	Variance From Previous Month	Actuals through June 2016
Mine (Beneficial Capital) ⁽⁵⁾	\$232.2	\$0.0	\$232.2
CO2 Pipeline	\$110.0	\$0.0	\$108.8
Regulatory and Other Asset Accounts ⁽⁶⁾	\$198.9	(\$0.6)	\$199.7
CC & Related Assets Placed in Service - Incremental (Net of Revenues) ⁽⁷⁾	\$24.7	(\$0.3)	\$17.4
Project AFUDC - Non Mine ⁽⁸⁾	\$798.1	\$1.0	\$665.7
Process Development Allowance	\$48.5	\$0.0	\$29.8
Beneficial Capital ⁽⁹⁾	\$47.6	\$0.0	\$47.6
Force Majeure ⁽¹⁰⁾	\$2.7	\$0.0	\$2.7
Change in Law ⁽¹¹⁾	\$5.6	\$0.0	\$5.6
Total Exemptions and Exceptions	\$1,376.2	(\$0.0)	\$1,296.3

Table 3: Total Project Costs (in millions of dollars)

Cost Category	Current View
Total Plant Subject to Cost Cap ⁽⁴⁾	\$5,384.5
Total Exemptions and Exceptions ⁽¹²⁾	\$1,376.2
Total Project Cost	\$6,760.7
Amount in Excess of the Cost Cap	(\$2,504.5)
Additional DOE CCRP2 Funding ⁽¹³⁾	(\$136.7)
Total Amount Eligible for Recovery Under 2012 MPSC Order ⁽¹⁴⁾⁽¹⁵⁾	\$4,119.5

(1) Effective August 2015, Mississippi Power Company began expensing certain ongoing project costs that previously were being deferred as regulatory assets. These costs continue to be included in the current view of project costs in this report.

(2) Non-incremental operating and maintenance costs related to the combined cycle and associated common facilities placed in service in August 2014 that are subject to the \$2.5 billion cost cap.

(3) Actual amounts through June 2016, currently subject to the cost cap include the following: Land, EPC, Ad Valorem, and Change in Law.

(4) Reallocation of Beneficial Capital, Force Majeure, and Change in Law for Capped Plant Costs. Table 1, current view, is disclosed as Total Cost to Example, as all Exemptions table 2 through June 2016, as provided for in the 2012 MPSC Order, is based on approval by the MPSC.

(5) The Lusk Mine was placed in service in June 2013. Construction costs incurred since that date are reported above as Mine costs. Operational costs incurred since the mine was placed in service are not included in this report. These costs are considered to be paid COC capital and are inventory costs and will be subject to NPUS and MPSC oversight in connection with the annual review of fuel costs.

(6) Effective August 2015, certain ongoing costs associated with certain assets placed in service and other non-constructed work in progress amounts that previously were deferred as regulatory assets are now being expensed through income. However, such costs and work in progress are not included in the current view of project costs in this report. The entity report associated with assets placed in service is reported in the entity report for the period ending August 2016 and other non-constructed work in progress amounts, as well as certain ongoing costs, are reported through income as they are expensed.

(7) Incremental operating and maintenance costs related to the combined cycle and associated common facilities placed in service in August 2014. This amount includes a credit for waste operating and maintenance expenses as well as inventory sales, maintenance services.

(8) AFUDC related to the combined cycle and associated common facilities placed in service in August 2014.

(9) Vantage Point Energy Company has received a commitment to subject to the cost cap for the Kemper IGCC to include approximately \$5.0 million related to operations and maintenance and challenges in start-up and commissioning activities.

(10) On April 5, 2016, Mississippi Power received approximately \$137 million in additional loan funding from the DOE for the Kemper IGCC, which is expected to be used as reduced value rate investments for customers.

(11) Total amount eligible for recovery under 2012 MPSC Order is for Mississippi Power Company's estimated loss as a result of exceeding the cost cap of \$2.5 billion. This amount includes estimated costs through September 30, 2016, in excess of the amount available through the Lusk Mine, and is subject to review and approval by the MPSC.

(12) Total amount eligible for recovery under 2012 MPSC Order includes the full and estimated amount for the Kemper IGCC that was previously negotiated to be purchased by North Mississippi Electric Power Association (NMEPA). On May 30, 2015, NMEPA withdrew its purchase agreement. Mississippi Power Company is awaiting the outcome of the arbitration related to the purchase of the 10% ownership interest. The outcome of this matter will not be determined until the fall.

Major Items and Milestones Achieved

- The purchase of 2,365 acres for the plant has been completed.
- Construction is complete for the effluent pond, water plant, water storage area, administrative and electrical buildings, lignite storage dome, electrical buildings, concrete installation, structural steel, process piping installation, refinery piping, and underground piping.
- The combined cycle was placed in service on natural gas on August 9, 2014.
- Construction is complete for three 15KV feeders and two 15KV lines, and the new 69KV line is complete and energized. Construction is complete on 11 substations and the Shell-Silver River line.
- The received natural gas and CO2 storage facilities are 100% complete. Construction is complete on all three pipelines.
- Long term contracts have been signed for the sale of CO2, sulfur, and ammonia. On June 3, Mississippi Power cancelled its contract with one of the CO2 buyers for the purchase of 30% of the CO2 to be produced by the Kemper IGCC. On that same day, Mississippi Power revised its contract with the other CO2 buyer to purchase 100% of the captured CO2. The revised contract provides for limited on-digital CO2 deliveries do not occur by July 1, 2017.
- First Fire on natural gas of Gasifier B's Start-Up B, was scheduled on March 1, 2016 and First Fire on natural gas of Gasifier A's Start-Up A, was scheduled on March 2, 2016.
- First Flow Testing - Train A was scheduled April 3, 2016, and First Flow Testing - Train B was scheduled May 25, 2016.
- First on-line - Train A was scheduled November 10, 2016, and First on-line - Train B was scheduled February 26, 2017.
- Refractory Cure - Train B was scheduled March 4, 2016.
- Unit 1 Driver Ready for First Unit 1 Feed was scheduled June 25, 2016.
- CCR Commissioning Train 3 was scheduled July 5, 2016.
- First Pyrolysis Train A was scheduled July 14, 2016.
- LHG (Non-Jerk) operation instances was scheduled July 20, 2016.

Mississippi Economic Impact

- Mississippi work done contributed 381 construction jobs in June for the Project. A total of 630 Mississippi companies have provided construction, equipment, material or professional services for the Project.

Overall Project Status

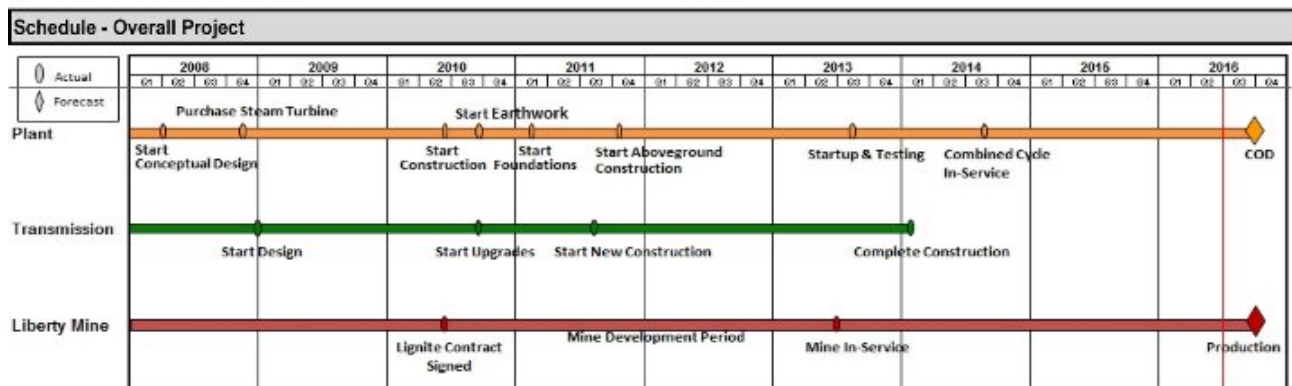
- Mississippi Power paid the combined cycle and associated common facilities portion of the Kemper IGCC in service on August 9, 2014.
- Mississippi Power's analysis of the time needed to complete the start-up and commissioning activities for the Kemper IGCC will continue until the remaining Kemper IGCC assets, including the gasifier and gas clean-up facilities for the 10% share, are placed in service which has been previously disclosed as expected to occur by September 30, 2016.

Table 4: Key Contracts Over \$10M

(in millions of dollars)	Issue Initial Inquiry	Award Date	Current View	Variance from Previous Month
Equipment and Material Contracts Over \$10M (Represents 92% of total equipment and material contracts)		Dates in BOLD are actual dates; others are forecast dates	\$1,480.6	(\$0.01)
Steam Turbine Generator	Nov-07	Aug-08		
Gas Turbines	Dec-08	Aug-09		
Heat Recovery Steam Generators	Oct-09	Jun-10		
Syngas Coolers	Jan-10	May-10		
Transport Gasifiers	Jan-10	May-10		
Fluid Bed Dryers	Mar-10	Jul-10		
Air Compressors	Apr-10	Sep-10		
Nitrogen Generation System	Jun-10	Dec-10		
Particulate Control Device (PCD) Systems	Nov-10	Sep-11		
Generator Step-up Transformers	Jul-10	Jan-11		
Station Service Transformers	Jul-10	Dec-10		
Coal Dense Phase Conveyors	Sep-10	Nov-10		
Coal Lock Vessels	Aug-10	Jan-11		
Water Treatment System	Jul-10	Feb-11		
Structural Steel	Sep-10	Dec-10		
Heat Exchangers	Apr-10	Multiple		
Chemical Reactors	Jul-10	Multiple		
Vessels	Jun-10	Multiple		
Heat Exchangers	Jul-10	Multiple		
Compressors	Jun-10	Multiple		
Catalyst	Jul-10	Multiple		
Pumps	Jun-10	Multiple		
Drums	Jan-10	Multiple		
Unit Chillers	Jul-10	Multiple		
Construction Piping	Jun-10	Multiple		
Instrumentation & Controls	Oct-10	Multiple		
Electrical	Apr-11	Multiple		
Transmission Line Structures	May-11	Multiple		
Construction Contracts Over \$10M (Represents 99% of total construction contracts)		Dates in BOLD are actual dates; others are forecast dates	\$1,959.1	\$0.7
Cut and Fill Excavation	Jul-10	Aug-10		
Underground	Nov-10	Jan-11		
Concrete	Nov-10	Jan-11		
Gasifier General Contractor	Apr-11	Jul-11		
Combined Cycle General Contractor	Oct-11	Dec-11		
Water Lateral	Jul-11	Sep-11		
Architectural Buildings	Feb-11	Multiple		
Cooling Tower	Feb-10	Sep-10		
Insulation	Jan-12	Jun-12		
Field Erected Tanks	Nov-10	Feb-11		
Water Storage Pond	Nov-11	Dec-11		
Gas Clean-up & By Products	Oct-11	Dec-11		
Turbine Generator	Nov-11	Dec-11		
HRSO Erection	Aug-11	Sep-11		
Piling	Sep-10	Dec-10		
Ash Storage	Nov-11	Dec-11		
Total			\$3,439.8	\$0.7

Safety			
OSHA Recordable Incident Rate:	Project to Date: .42	Work Hours:	Project to Date: 39,631,697
	Year to Date: .15		Year to Date: 2,590,040

Schedule - Key 90-Day Milestones - as of W/E 07/20/16	Forecast	Actual	Comments
Lignite Dryers ready for First Lignite Feed	Jun-16	Jun-16	
LDF Non-Dome	Jul-16	Jul-16	
First Syngas Production - Train B	Jul-16	Jul-16	
AGR Commissioning - Train B	Jul-16	Jul-16	
WSA Commissioning	Jul-16		
AGR Commissioning - Train A	Jul-16		
Reliable/Clean Syngas Available B	Aug-16		Previously forecasted in Jul-2016
Refractory Cure - Train A	Aug-16		Previously forecasted in Jul-2016
First Lignite Feed A	Aug-16		Previously forecasted in Jul-2016
First Syngas Production - Train A	Aug-16		Previously forecasted in Jul-2016
Reliable/Clean Syngas Available A	Aug-16		



Permits and Approvals			
Dates in Bold are actual dates, others are forecast dates			
Description	Status	Submittal	Approval
State Groundwater Test Well Permit MS-GW-16425	Approved	5/30/07	6/26/07
State NPDES Stormwater Run-off Permit MSR104866	Approved	11/13/07	3/12/10
State PSD Air Permit 1380-00017	Approved	12/20/07	3/12/10
State Groundwater Production Well Permit MS-GW-16562	Approved	5/21/08	7/22/08
MPSC Certificate	Approved	1/16/09	6/3/10
State Permit to Operate Wastewater Disposal System w/no Discharge Permit MSU009005 ⁽¹⁾	Approved	11/19/09	3/12/10
State Dam Safety Approval App. No. 09-041	Approved	12/1/09	3/23/10
State Dam Safety Approval App. No. 09-040	Approved	12/1/09	3/23/10
FAA stack permit	Approved	2/8/11	3/14/11
DOE NEPA ROD (CCPI2)	Approved	11/6/09	8/19/10
State 401 Water Quality Certification	Approved	10/27/09	9/14/10
USACE 404 Permit for Wetlands SAM-2009-01149-DMY	Approved	10/27/09	11/18/10
State Solid Waste Management Permit	Approved	6/11/10	11/15/11
State Dam Safety - Make-up Reservoir	Approved	6/3/11	8/12/11
State Dam Safety - Retention Pond B	Approved	6/1/11	8/9/11
Dam Safety LDF Retention Pond Permit	Approved	10/6/11	11/2/11
NPDES Emergency Discharge Permit	Approved	12/1/11	8/12/14
NPDES Baseline Industrial Storm Water General Permit	Approved	5/24/13	3/7/14
Title IV Acid Rain Permit ⁽²⁾	Pending	10/13/11	
Title V Operating Permit ⁽³⁾	Pending	8/22/14	
Risk Management Plan (RMP)	Approved	4/22/15	4/22/15

(1) State Permit to Operate Wastewater Disposal System w/no Discharge Permit MSU009005 was revoked on 8/12/14 due to the approval of the NPDES Emergency Discharge Permit on 8/12/14.

(2) Title IV Acid Rain Permit application was submitted to MDEQ on 10/18/11. The application is binding and enforceable until MDEQ issues the permit.

(3) Title V Operating Permit application was submitted 8/18/14. The plant will operate under the current construction permit until the Title V Operating Permit is issued.

Economic Impact

Table 5: Mississippi Construction, Equipment, Material and Professional Services Companies (Tier 1)

Company Name	City	Type of Work	Company Name	City	Type of Work
3 D Trucking	Louisville	Professional Service	Broadmoor Home	Meridian	Construction
3point Technologies	Columbus	Professional Service	Brown Printing Company	Meridian	Construction
4 County Electric Power Association	Columbus	Construction	Brown & Mitchell	Gulfport	Construction
A E Allen	Pass Christian	Construction	Brunini	Jackson	Professional Services
A&B Electric	Meridian	Professional Services	Buckwalter Stadium Inc.	Meridian	Construction
AA Calibration Services	Yazoo City	Professional Service	Burford Electric Service, Inc	Columbus	Construction
ABF Freight	Jackson	Material	Burkhalter Rigging Inc	Columbus	Construction
Accu-Fab & Construction, Inc	Moss Point	Material	Burk's Aviation	Hattiesburg	Professional Services
Ace Data Storage	Gulfport	Professional Service	Business Interiors	Jackson	Professional Services
ADCO Companies Ltd	Brandon	Equipment	Can't Be Beat Fencing	Perkinston	Construction
Advanced Mold Professionals LLC	Lake	Professional Service	Capital Concrete Cutting Inc	Clinton	Materials
AES Limited PC	Meridian	Construction	Capitol Hardware Company, Inc.	Jackson	Professional Services
Aggreko Cooling Tower Service	Ridgeland	Equipment	Carter Miller Associates	Meridian	Professional Services
Air Center of Mississippi	Jackson	Material	Cawco, Inc	Bailey	Construction
Air Management, LLC	Meridian	Construction	Central Culvert & Pipe	Philadelphia	Material
Air Tool Supply	West Point	Material	Central Mississippi Communications	Kosciusko	Professional Services
Airgas South	Meridian	Construction	Central Office Supply	Kosciusko	Construction
AIA Management	Jackson	Professional Services	Central Pipe Supply Inc	Jackson	Material
Al Covington / Bill Oubre	Meridian	Construction	Chain Electric Co.	Hattiesburg	Construction
All Brand Foods	Hattiesburg	Professional Services	Chancellor Supply	Laurel	Material
All Clean Janitorial	DeKalb	Professional Services	Chet's Paint & Body Shop	Meridian	Professional Services
All Safe Technologies	Gulfport	Professional Services	Chevron Products	Moss Point	Equipment
All Star Printing	Columbus	Materials	Chris Haynes Electric Supply	Jackson	Materials
Almetek Industries Inc	Ridgeland	Material	Cintas Corporation	Jackson & Meridian	Construction
American Controls	Amory	Material	Cintas FAS	Jackson	Professional Services
American Fire & Safety	Laurel	Professional Services	City of Meridian	Meridian	Professional Services
American Forest Management	Meridian	Professional Services	Clives Steel Co.	Rosedale	Material
American Rental	Philadelphia	Construction	Coast Valve & Fittings Company, LLC	Pascagoula	Material
American Supply Co Inc	Jackson	Material	Coastal Drug Detection LLC	Gulfport	Professional Services
Anderson Retail	Hattiesburg	Material	Coastal Painting and General Contractors	Gautier	Professional Services
APAC Mississippi Inc	Jackson	Construction	Collins and Null	Hattiesburg	Professional Services
Appraisal Group	Philadelphia	Professional Services	Collins Filter Co Inc	Gulfport	Material
Appraisers Associated Ltd.	Meridian	Professional Services	Collinsville Hardware	Meridian	Material
Aquaterra Engineering LLC	Madison	Professional Services	Columbus Rubber & Gasket	Columbus	Construction
Argus Analytical	Jackson	Professional Services	Commercial Interiors	Long Beach	Professional Services
Asplundh Tree Expert Co	D'Iberville	Construction	Complete Industrial Solutions LLC	Vancleave	Construction
Atwood Fence	Kosciusko	Construction	Comsouth	Meridian	Professional Services
B Clean	Laurel	Professional Services	Consolidated Electrical Distributors Inc	Gulfport	Material
Baker Ready Mix	Louisville	Material	Consolidated Pipe & Supply Co	Pascagoula	Material
Balch & Bingham, LLP	Gulfport	Professional Services	Contract Fabricators, Inc.	Holly Springs	Equipment
Barnhart Crane & Rigging	Jackson	Construction	Corbett Bolt & Screw	Gulfport	Material
Bay Pest Control	Ocean Springs	Professional Services	CSS Document Solutions	Meridian	Professional Services
Bayou Management Inc	Columbus	Professional Services	CTC, Inc	Louisville	Material
Beckham Concrete Cutting, LLC	Perkinston	Construction	Cuevas Auction, LLC	Picayune	Professional Services
Bellavilla Community Club	Bailey	Construction	Custom Creations and More	Meridian	Construction
Bengal Resources and Associates, Inc.	Columbia	Professional Services	D&E Construction Co Inc	Meridian	Construction
Betty Luke	Bailey	Professional Services	DACO LLC	Columbus	Professional Services
Bill Oakley Consulting Hydrologist, Inc.	Brandon	Professional Services	Daily Equipment Co Inc	Jackson	Construction
Bill's Trailer Sales	Ackerman	Materials	David L. Moon	Collinsville	Construction
Black Brothers, Inc.	Ackerman	Construction	Davidson Hauling & Constriction	Marion	Material
Blackwell Shepards Locksmith	Meridian	Professional Services	Davis Trailer	Moselle	Construction
Blaine's Trailer Rental & Sale	Richland	Construction	Deep South Services LLC	Hickory	Material
BMI Environmental Services	Gulfport	Professional Services	Design Precast and Pipe	Gulfport	Construction
Bonds of Love Ministries	DeKalb	Construction	Dibs Chemical & Supply	Gulfport	Construction
Briggs Equipment	Jackson	Construction	Dickerson Petroleum	Kosciusko	Construction

continued on page 5

**Mississippi Power
Kemper County IGCC Project**

**Total Project
Mississippi Economic Impact**

**MPSC Docket No. 2009-UA-0014
Monthly Status Report
Through June 2016**

Economic Impact (continued from page 4)

Table 5: (continued) Mississippi Construction, Equipment, Material and Professional Services Companies (Tier 1)

Company Name	City	Type of Work	Company Name	City	Type of Work
Ditch Witch of Mississippi	Pearl	Construction	H & H Construction	Greenwood	Construction
Dixie Mat & Hardwood Co Inc	Sandy Hook	Material	H & P Leasing, Inc.	Flowood	Construction
Document Storage Solutions	Jackson	Construction	Hampton & Associates Law Office	DeKalb	Professional Services
Doug Jones & Son Construction Co	Meridian	Construction	Hanson	Gulfport	Construction
Douglas Inc.	Jackson	Professional Service	Hargrove Engineers Constructors	Pascagoula	Professional Services
Dowdle Gas Company	DeKalb	Construction	Havard Pest Control	Hattiesburg	Professional Services
Dr. David Lang, PhD	Starkville	Professional Services	HD Supply Waterworks LTD	Pearl	Material
DZ Atlantic	Moss Point	Equipment	Heartland Pump Rental & Sales Inc	Horn Lake	Construction
E. Patrick Cassidy & Associates Inc.	Gulfport	Professional Services	Heblon Heating & Air Conditioning	Meridian	Construction
Earl Dudley Associated	Jackson	Construction	Hemphill Construction	Florence	Construction
East Mississippi Electric Power Assoc.	Meridian	Construction	Henderson Steel Corp	Marion	Construction
ECO Systems (now Allen Eng. & Science)	Jackson	Professional Services	Herring Gas Co Inc.	Philadelphia	Construction
Eddie Briggs, Attorney at Law	Madison	Professional Services	Hi Grade Gin Corporation	Winona	Construction
Educational Furniture & Equipment Co.	Meridian	Construction	Hilton Spears Custom Cabinets	Philadelphia	Construction
Eley Guild Hardy Architects	Biloxi	Professional Services	HJM Forest Resource Management	DeKalb	Professional Services
Emergency Equipment Professionals	Southaven	Professional Services	Holliday Construction	Poplarville	Construction
Endom Welding & Trailer Repair	Ellisville	Construction	Holloway Termite & Pest Services	Meridian	Professional Services
Engineering Plus	Meridian	Professional Services	Hooper Electronics	Pascagoula	Material
Engineering Services	Jackson	Professional Services	Hotel & Restaurant Supply	Meridian	Material
Eutaw Construction	Aberdeen	Construction	Howard Industries	Laurel	Equipment
F L Clayton Trust	Meridian	Construction	HRD Safety	Jackson	Material
Falson Office Products Co LLC	Gulfport	Construction	Hughes Brothers Inc	Jackson	Material
Fastenal	Philadelphia	Material	Ice Plant	Meridian	Construction
FC&E Engineering LLC	Brandon	Professional Services	Industrial Commercial Fire Protection	Lucedale	Construction
Ferguson Enterprises	Jackson	Equipment	Industrial Electric Motor Works Inc	Meridian	Professional Services
Firestone	Meridian	Professional Services	Industrial Machine & Manufacturing	Meridian	Professional Services
Fish and Fisher	Jackson	Construction	Industrial Steel Corp.	Jackson	Construction
Fluid Process & Pumps	Florence	Material	Infolab, LLC	Clarksdale	Professional Services
Forest Services, Inc.	Pelahatchie	Professional Services	Ivy Consulting	Quitman	Professional Services
Forestry Suppliers	Brandon	Construction	J & J Contractors	Collinsville	Professional Services
Fralley Dozer Service	Collins	Construction	J W Lee Company, Inc	Gulfport	Equipment
Fulton Line Service	Preston	Construction	Jabez Group, LLC	Madison	Professional Services
G & K Services	Jackson	Professional Services	Jackson Bolt & Screw	Jackson	Material
G & O Supply Co. Inc.	Houston	Material	James Self Inc dba JSI Communication	Pearl	Material
Gary G. Williams, Appraisals	Flowood	Professional Services	JH Haynes Electric Co Inc	Gulfport	Professional Services
Genesis Telecommunications	Collinsville	Professional Services	Joe McGee Construction	Lake	Construction
GEO Products	Madison	Material	John B. Stewart Real Estate Appraiser	Canton	Professional Services
George's Auto Parts	Meridian	Construction	John C Stennis Memorial Hospital	DeKalb	Professional Services
Geotechnical Engineering Assoc.	Ridgeland	Professional Services	John Fayard Moving & Warehousing, LLC	Gulfport	Materials
Gipson Steel Inc	Meridian	Construction	John's Welding	Meridian	Professional Services
Glass Inc.	Meridian	Material	Johnson Surveying	Collinsville	Professional Services
Glassworx	Philadelphia	Material	K & S Industrial Repair, Inc	Brookhaven	Materials
Glenn Hollingsworth Enterprise LLC	Hickory	Construction	K. C. Garbage & Solid Waste	DeKalb	Construction
Glenn Machine Works	Columbus	Construction	Kelly Services	Gulfport	Professional Services
Glover Young Walton & Simmons, PLLC	Meridian	Professional Services	Kemper Construction Supply	DeKalb	Material
Godwin Group	Jackson	Professional Services	Kemper County Landfill	DeKalb	Professional Services
Goforth Forest Management, Inc.	Meridian	Professional Services	Kemper County Messenger	DeKalb	Professional Services
GraRock Trucking	Macon	Construction	Kemper Electric Supply	DeKalb	Material
Greenway Construction	Wiggins	Construction	Kennedy Construction	Meridian	Construction
Guice Marketing & Consulting	Biloxi	Professional Services	Knesal Engineering Services, Inc.	Gulfport	Professional Services
Gulf Coast Fence	Pascagoula	Construction	Knowles Material Co	Jackson	Material
Gulf Office Systems Inc	Saucier	Professional Services	L & M Carpet Cleaning	Meridian	Professional Services
Gulf Sales & Supply	Pascagoula	Construction	Lauderdale County Farm Supply	Meridian	Materials
Gulf South Survey & Environmental	Biloxi	Professional Services	Laurel Ford	Laurel	Equipment
H & H Chief Sales	Carthage	Construction	Laurel Machine & Foundry Co	Laurel	Materials

continued on page 6

Economic Impact (continued from page 5)

Table 5: (continued) Mississippi Construction, Equipment, Material and Professional Services Companies (Tier 1)

Company Name	City	Type of Work	Company Name	City	Type of Work
Lawyers PLLC	Meridian	Professional Services	Office Furniture Jackson CIN	Ridgeland	Construction
Layne Christenson	Jackson	Construction	Office Innovations	Ridgeland	Construction
Long Wholesale, Inc	Meridian	Material	ORR Safety Corp	Jackson	Material
LPK Architects	Meridian	Professional Services	Pac Services	Biloxi	Professional Services
Luke Printing Company	Meridian	Professional Services	Patrick Allen Garage Door Co.	Meridian	Construction
Lyle Machinery Company	Jackson	Equipment	Pearson Services	Louisville	Construction
M G Dyess Inc	Bassfield	Construction	Perfect Touch Contractors LLC	DeKalb	Construction
M&M Holdings	Kilmichael	Material	Perma R Products	Grenada	Material
Magnolia Steel Co, Inc.	Meridian	Professional Services	Peterbilt Truck Center	Jackson	Construction
Mailroom Consultants	Jackson	Professional Services	Pettigrew Forestry Consultants	Kiln	Professional Services
Malouf	Greenwood	Construction	Pickering & Associates	Jackson	Professional Services
Mar-Com Comm, Inc.	Decatur	Construction	Plan House Printing and Graphics	Tupelo	Professional Services
Marion Water Department	Marion	Construction	Powell Transportation	Columbia	Material
Mars Manufactured Homes	Meridian	Construction	Preformed Line Products Co	Ridgeland	Material
Martin Supply (MISCO)	Saltillo	Material	Print Plus	Meridian	Professional Services
Martin Truck & Tractor	Columbus	Construction	Pritchard Engineering	Starkville	Professional Services
Marvin's	Meridian	Material	Pro Turf, Inc.	Winona	Construction
Mary Joyce Angero	Meridian	Construction	ProCall Services	Biloxi	Professional Services
Max Floor Specialist	Brandon	Professional Services	Progressive Pipeline	Meridian	Construction
McCrory Construction Services	Columbus	Construction	ProModular	Jackson	Construction
McElroy Plumbing & Heating	Meridian	Construction	Provine Helicopter Service, Inc.	Greenwood	Professional Services
Medical Foundation (Rush Hospital)	Meridian	Professional Services	Puckett Machinery Co	Jackson	Construction
MEI Electrical Inc	Philadelphia	Construction	Puckett Rents Inc	Jackson	Construction
Melvin Chaney Jr Real Estate Appraiser	Madison	Professional Services	Quality Welding & Fabrication	Columbia	Equipment
Mercury Aviation Inc	Flowood	Professional Services	Ralph L. Morgan	Meridian	Material
Meridian Community College	Meridian	Professional Services	Richard R. Hite Appraisal, LLC	Canton	Professional Services
Meridian Personnel Service	Meridian	Professional Services	Robert's Sewing Machine Parts	Meridian	Professional Services
Meridian Tire & Brake	Meridian	Professional Services	Robinson Electric Supply Co Inc	Meridian	Material
Micro Methods Laboratory Inc	Ocean Springs	Professional Services	Roto-Rooter Sewer & Drain	Meridian	Professional Services
Mid South Welding	Meridian	Construction	RMKPC, Inc dba Orkin	Meridian	Professional Services
Mikropul	Iuka	Equipment	Robine & Welch Machine & Tool Co.	Laurel	Construction
Miller Enterprises	Hattiesburg	Construction	Rush Care	Meridian	Professional Services
MillerCo Inc.	Gulfport	Construction	Ryan Motors Inc	Hattiesburg	Construction
Milton's A/C Service	DeKalb	Construction	S&S Welding	Ellisville	Professional Services
Mississippi Beverage Water, LLC	Meridian	Construction	Sam Oswalt & Son, Inc.	Starkville	Construction
Mississippi Department of Transportation	Jackson	Construction	Sanders Air & Heat	Meridian	Professional Services
Mississippi Gauge & Supply, Inc.	Meridian	Material	Sanders Gas	Meridian	Construction
Mississippi Police Supply Company	Ruleville	Material	Sequel Electrical Supply	Meridian	Material
Mississippi State University	Starkville	Professional Services	Service Master	Marion	Professional Services
Missouth Vital Records	Meridian	Professional Services	Sherwin Williams	Meridian	Material
Mitchell Sign, Inc.	Meridian	Professional Services	Sign's Plus of Meridian	Meridian	Construction
MMC Material	Meridian	Construction	Simmons Wrecker Service, Inc.	Meridian	Professional Services
Modern Landscape Design	Meridian	Professional Services	Singley Construction Co	Columbia	Construction
Modular Space Corp	Jackson	Construction	Sirmon & Associates	Pelahatchie	Professional Services
Motion Industries	Meridian	Material	Slay Steel Inc	Meridian	Material
Mowdy Cabinetry	Meridian	Professional Services	South Mississippi Hydroseeding	Wiggins	Construction
MSC Industrial	Meridian	Material	Southern Business Supply	Meridian	Construction
Necalse Locksmith Service	Gulfport	Material	Southern Chevrolet	DeKalb	Construction
Neel Schaffer	Jackson	Professional Services	Southern Colonel Homes Inc	Hattiesburg	Construction
Nehring	Ridgeland	Material	Southern Hose & Industrial	Jackson	Material
Newell Paper Company	Meridian	Material	Southern Natural Resources, Inc.	Stewart	Professional Services
NGK Locke Inc	Ridgeland	Material	Southern Pine Electric	Taylorville	Equipment
NL Carson	Carthage	Construction	Southern Pipe & Supply Co Inc	Gulfport	Material
North Mississippi Medical Center	Eupora	Professional Services	Southern Surveyors Group LLC	Gulfport	Professional Services
Northwest Kemper Water Association	Preston	Construction	Southern Tire Mart	Meridian	Construction

continued on page 7

**Mississippi Power
Kemper County IGCC Project**

**Total Project
Mississippi Economic Impact**

**MPSC Docket No. 2009-UA-0014
Monthly Status Report
Through June 2016**

Economic Impact (continued from page 6)

Table 5: (continued) Mississippi Construction, Equipment, Material and Professional Services Companies (Tier 1)

Company Name	City	Type of Work	Company Name	City	Type of Work
Southern Waste Disposal	Meridian	Construction	United Fence	Meridian	Construction
SPCS Inc	Gulfport	Professional Services	United Rentals N.A. (formerly RSC Eqmt)	Meridian	Construction
Specialty Fencing	Meridian	Construction	Vice Brothers Unlimited	Moss Point	Material
Specialty Fuel	Kosciusko	Construction	Vice Construction Co.	Moss Point	Construction
Specialty Hose & Fabrication	Gulfport	Material	Vick's Paint & Body Shop	DeKalb	Professional Services
Specialty Machine	Gulfport	Equipment	Volvo Rents	Hattiesburg	Construction
Starkville Computers	Starkville	Construction	Vulcan	Laurel	Material
Stevie Holiday	DeKalb	Professional Services	W G Yates & Sons Construction	Biloxi	Construction
Stewart Environmental Construction	Tupelo	Construction	W.L. Cook	Bailey	Professional Services
Stribling Equipment	Jackson	Construction	Walker Audio	Biloxi	Professional Services
Strickland Companies	Columbus	Construction	Walley Forestry	Ellisville	Professional Services
Structural Steel Services	Meridian	Material	Waring Oil Company LLC	Vicksburg	Material
Stuart C. Irby Co.	Meridian/Jackson	Material	Waste Management	Tupelo & Meridian	Professional Services
Sturgis Mat	Ackerman	Material	Waste Pro of MS	Meridian	Professional Services
Sudden Service	Louisville	Construction	Waters International	Meridian	Material
Sunbelt Equipment Marketing	Meridian	Construction	Waters Truck & Tractor	Kosciusko	Construction
Sunbelt Insulation	Lucedale	Material	Waterstone Business Strategies	Brandon	Professional Services
Sutton Lumber	Meridian	Material	Watson Quality Ford	Jackson	Construction
Suzy Q Monogramming Screenprinting	Philadelphia	Construction	Watt Equipment	DeKalb	Construction
Sweetman Security Service, Inc	Biloxi	Professional Service	Wilkerson Construction	DeKalb	Construction
System Scale	Jackson	Equipment	William Clay	DeKalb	Construction
TK Stanley	Waynesboro	Material	Woodall Electric Inc	Meridian	Professional Services
Taylor Machine Works	Louisville	Construction	Woodstock Furniture	Meridian	Construction
Tencarva Machinery	Jackson	Construction	Working Solutions	Meridian	Professional Services
Terracon Consultants	Madison	Professional Services	Yard Services	Meridian	Professional Services
The 1869 Group LLC	Jackson	Construction			
The Bolt Co dba Henderson Bolt	Meridian	Material			
The McGinnis Lumber Company	Meridian	Material			
The Service Company of Mississippi	Meridian	Professional Services			
The Sign Doctor	Meridian	Material			
Thomas Refrigeration	Meridian	Professional Services			
Threaded Fasteners	Gulfport	Material			
Thomasson Company	Philadelphia	Construction			
Tice Engineering	Wiggins	Professional Services			
Tim Parker Construction	Soso	Construction			
Timber Craft, Inc.	DeKalb	Professional Services			
Tolbert Chevrolet	Philadelphia	Construction			
Toolpushers Supply Co.	Laurel	Material			
Tooney's Tire Center	DeKalb	Professional Services			
Town of DeKalb	DeKalb	Construction			
Town of Marion	Marion	Construction			
Traffic Control Products Company	Brandon	Construction			
Tri-State Consulting Services	Philadelphia	Professional Services			
Truckers Supply	Meridian	Construction			
TST&E, LLC	Carriere	Construction			
Tull Brothers	Meridian	Construction			
U Save Car & Truck Rental	Meridian	Construction			
Underwood Sales Inc	Ovett	Construction			

Total Mississippi Contracts - Tier 1 and Tier 2 (in millions of dollars) **\$2,051**
Total Mississippi Spend through June 2016 - Tier 1 and Tier 2 (in millions of dollars) **\$2,036**

Mississippi Workforce	Plant	Mine	Total
Construction Jobs	391	0	391
Plant/Mine Jobs	245	103	348

Mine Status

The surface coal mining and water pollution control permits for the Liberty Mine were approved by the MDEQ Permit Board on December 13, 2011. Liberty Mine began commercial operations on June 5, 2013. The dragline was placed in service on November 15, 2013. Construction activities are complete for the mine.

Table 6: Mine Costs (in millions of dollars)

Cost Category	Current View	Actuals through June 2016
Development	\$80.2	\$80.2
Land and Mineral Leases	29.2	29.2
Equipment	106.3	106.3
Mine AFUDC	16.5	16.5
TOTAL ⁽¹⁾	\$232.2	\$232.2

(1) The Liberty Mine was placed in service in June 2013. Construction costs incurred since that date are reported above as Mine costs. Operational costs incurred since the mine was placed in service are not included in this report. These costs are considered to be post-COD capital and fuel inventory costs and will be subject to MPUS and MPSC oversight in conjunction with the annual review of fuel costs.

Mine Safety

Recordable Incident Rate: 1.08 Project to Date Work Hours: 925,492

Mine Permits and Approvals

Dates in **Bold** are actual dates, others are forecast dates

Description	Status	Submittal	Approval
401 Water Quality Certification	Approved	8/9/10	9/14/10
404 USCAE Permit	Approved	8/9/10	12/10/10
MSHA Sedimentation Pond (Revision to include pond)	Approved	8/29/13	6/23/14
MSHA Mine Identification Number	Approved	12/7/10	12/8/10
State mine permit (SMCRA)	Approved	1/18/11	12/14/11
NPDES permit	Approved	3/1/11	12/14/11
State Dam Construction Permit	Approved	3/18/11	6/29/11
State Stormwater Permit	Approved	11/23/11	1/27/12
SPCC Plan	Approved	3/30/12	3/30/12
State Wastewater Discharge (Sewage)	<i>Not required; zero discharge system planned</i>		
Dragline FAA permit	Approved	7/9/12	8/13/12